

ISSUE 5

PRODUCT CATALOGUE

2020



alpha
TUBULAR MOTORS PTY LTD
MOTORISATION MADE EASY

Tubular Motors

WSER Remote Control Motors	p 4-8
DC Motor Systems	p 9-10
WSEC Automation System Motors	p 11-13
WSS Mechanical Limits Motors	p 14-16
Manual Override Motors	p 17-19
WSEB 60mm Motor	p 19

Curtain System

Curtain Motors	p 20-21
Curtain Accessories	p 22-23



Control Systems

Alpha-Neo App & Link Box	p 24
Remote Controls	p 25-28
Mechanical Wall Switch	p 28
Receivers	p 29
Relay Controlled Remote	p 30

Sun & Wind Sensors

Motion Sensor	p 31
Sun and Wind Sensors	p 32

Accessories

Crown and Drive Adapters	p 34-43
Brackets	p 43-44
Limit Setting Device & Test Lead	p 45
Cables	p 46
Manual Override	p 46
Folding Arm Motor Guide	p 48
Motor Lifting Capacity Chart	p 49



This is a true one motor for all blinds, internal motor.

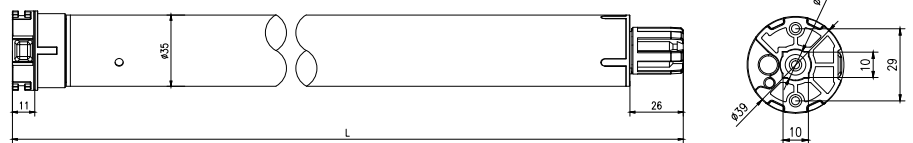
The WSER40 5/28 is able to lift 6m wide x 2.5m drop with 2 links.

It's reliable and delivers smooth quiet operation.



Electronic Limit Switch

Built in Receiver Motor
35mm diameter



**7
YEAR
WARRANTY**
QUALITY
ASSURED



Projection Screen



Roller Blind

Specifications - 240V / 50Hz

Type	5/28	10/14
Rated Torque (N.m)	5	10
Output Speed (rpm)	28	14
Nominal Consumption (W)	116	116
Nominal Voltage (V)	240	240
Nominal Current (A)	0.49	0.49
Running Time (Min)	4	4
Protection Index (IP)	44	44
Total Length (mm)	560	560
Maximum Turns (Turn)	∞	∞
Net Weight (Kg)	1.34	1.35

Product Certificates



WSER50

Universal

7 year replacement warranty
Electronic limit switch
Built-in receiver
Wireless limit setting
External antenna

5

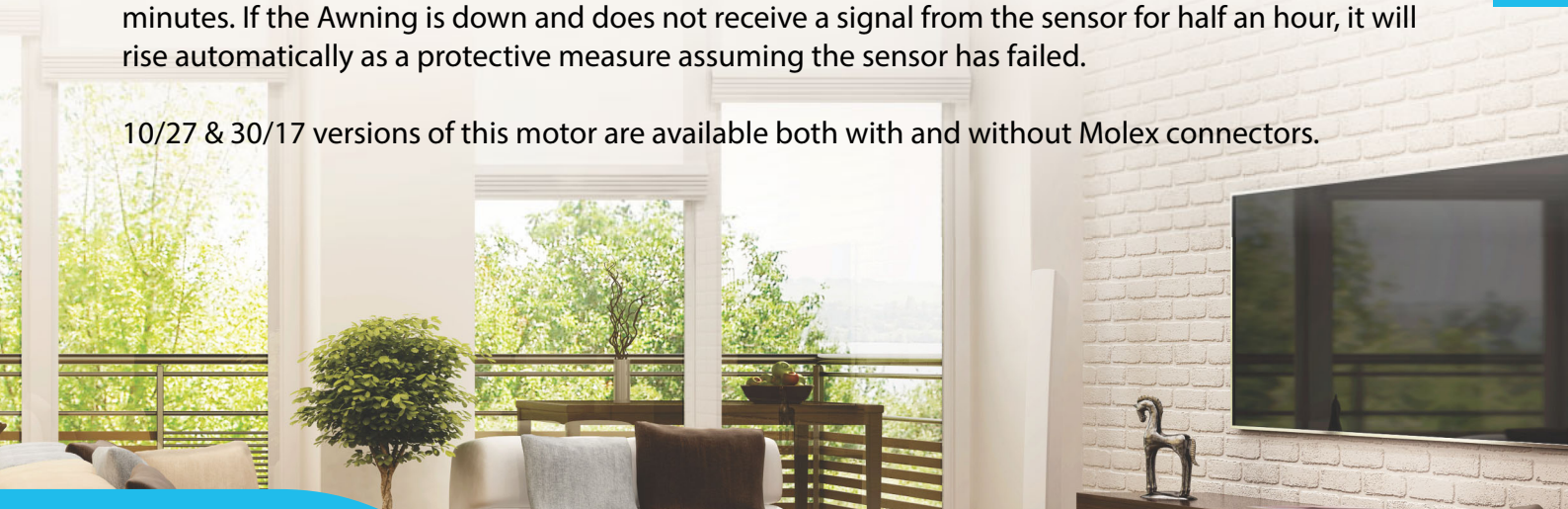
TUBULAR MOTORS

Our WSER50 series Universal motors are the most popular external straight drop motors in Australia.

Due to the torque stop function, this motor is ideal for all external straight drop systems. This protective feature can be used to stop on stoppers at the top limit in side channel systems, and can also be used to tension the fabric when the awning is down. A top limit is set normally and the torque stop function can be used in conjunction. Suitable for use with RS001 and RS002, Sun/Wind sensors.

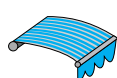
When used with Sun/Wind sensors, this motor detects a pulse from the sensor issued every 20 minutes. If the Awning is down and does not receive a signal from the sensor for half an hour, it will rise automatically as a protective measure assuming the sensor has failed.

10/27 & 30/17 versions of this motor are available both with and without Molex connectors.



Electronic Limit Switch

Built in Receiver Motor
45mm diameter



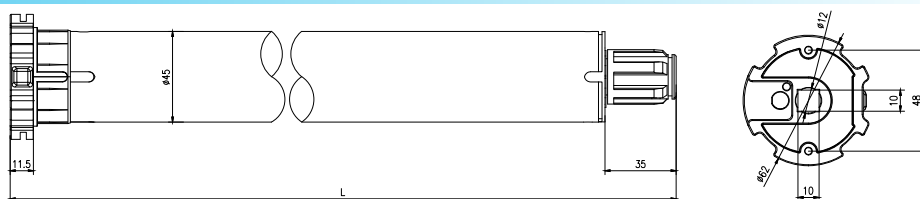
Awning



Roller Blind



Roller Shutter



Specifications - 240V / 50Hz

Type	10/27	30/17	50/13
Rated Torque (N.m)	10	30	50
Output Speed (rpm)	27	17	13
Nominal Consumption (W)	203	226	244
Nominal Voltage (V)	240	240	240
Nominal Current (A)	0.84	0.95	1.06
Running Time (Min)	4	4	4
Protection Index (IP)	44	44	44
Total Length (mm)	570	570	600
Maximum Turns (Turn)	∞	∞	∞
Net Weight (Kg)	2.30	2.45	2.65

Product Certificates



WSER50

Folding arm motor

7 year replacement warranty
Electronic limit switch
Built-in receiver
Wireless limit setting
External antenna

Also referred to as "Cassette Awning" motors, these motors are designed to automatically set their inner limit based on tension. It will also allow you to set the inner limit manually if you require.

When using the auto inner limit setting, the outer limit is set manually using the remote and it will find its own inner stopping position by detecting the resistance as it reaches the fully closed position the first time it is closed. After this the motor will stop in this position after detecting an increased resistance of 25% while moving.

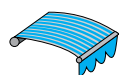
On larger cassette awnings, 25% is sometimes not enough so you can increase this to 50%, 75% or 100% if required. It's rare to need this adjustment but it's a good feature to have.

When used with Sun/Wind sensors or Motion sensors, this motor detects a pulse from the sensor issued every 20 minutes. If the Awning is out and does not receive a signal from the sensor for half an hour, it will close itself automatically as a protective measure assuming the sensor has failed or the batteries are flat.



Electronic Limit Switch

Built in Receiver Motor
45mm diameter



Awning

Product Certificates



Specifications - 240V / 50Hz

Type	30/17	50/13
Rated Torque (N.m)	30	50
Output Speed (rpm)	17	13
Nominal Consumption (W)	226	244
Nominal Voltage (V)	240	240
Nominal Current (A)	0.95	1.06
Running Time (Min)	4	4
Protection Index (IP)	44	44
Total Length (mm)	570	600
Maximum Turns (Turn)	∞	∞
Net Weight (Kg)	2.45	2.65

7

Type	30/17
Rated Torque (N.m)	30
Output Speed (rpm)	17
Nominal Consumption (W)	226
Nominal Voltage (V)	240
Nominal Current (A)	0.95
Running Time (Min)	4
Protection Index (IP)	44
Total Length (mm)	570
Maximum Turns (Turn)	∞
Net Weight (Kg)	2.45

WSER60 100/12

Universal motor

7 year replacement warranty
Electronic limit switch
Built-in receiver
Wireless limit setting
External antenna

This motor is the super heavy duty version in the WSER family.

Although it's a universal motor, it's compatible with extra-large folding arms including the additional safety features provided by motion and wind sensors.

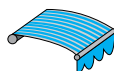
Due to the larger diameter of this motor, the smallest tube it can be used with is a 78mm Gal round tube with keyway, or 70mm octagonal roller shutter tube.

Electronic Limit Switch

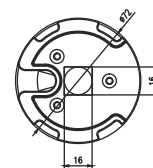
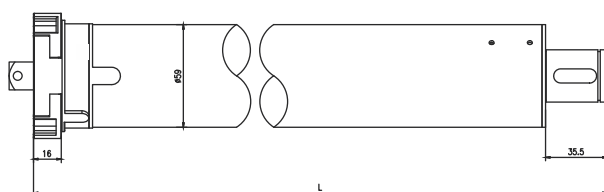
Built in Receiver Motor
60mm diameter



7
★ ★ ★
YEAR
WARRANTY
QUALITY
ASSURED



Awning



Specifications - 240V / 50Hz

Type	100/12
Rated Torque (N.m)	100
Output Speed (rpm)	12
Nominal Consumption (W)	370
Nominal Voltage (V)	240
Nominal Current (A)	1.60
Running Time (Min)	4
Protection Index (IP)	44
Total Length (mm)	685
Maximum Turns (Turn)	∞
Net Weight (Kg)	5.06

Product Certificates



WSERD30-B

Rechargeable 12v system

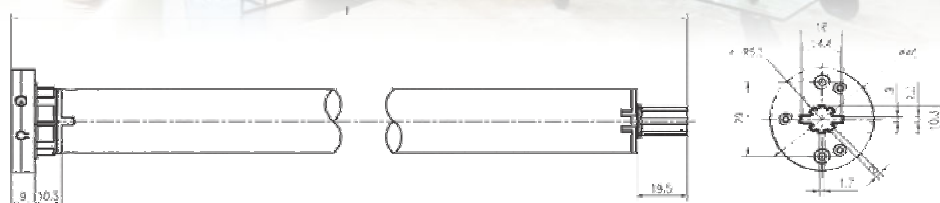
DC 12V power supply
Electronic limit switch
Built-in receiver

9



ALDC charger required

- * Charger comes with 3m cable.
- * 3m extension cable also available.
- * Motor comes with 20cm charging tail for optional use, in case the motor head is difficult to access after installation.



This new version of our popular battery motor has a new ground-breaking coreless DC drive inside, that is much more efficient and much quieter than other battery motors.

The WSERD30-B motor has internal lithium rechargeable batteries with enough storage for 12-18 months of average use. Our testing showed an average of 750 up/down cycles per charge. Our most popular opposition brands only achieve 500 cycles average in the same test blind. It can be used on blinds up to 3m x 3m.

The fittings for this motor will allow it to be used with a range of tube sizes from 30-50mm in diameter. All of the charging intelligence is taken care of inside the motor, not by a 3rd party charger. This eliminates many of the issues experienced by other brands of DC motors. The motor will indicate both when charging is required, and completed. It cannot be overcharged and it will not start to discharge when the batteries are full as other brands may do. The charger plugs directly into the motor head so there is no need for an unsightly charging cable.



7 YEAR WARRANTY
QUALITY ASSURED

*3 year warranty on batteries



Roller Blind

- New super efficient coreless motor design
- 12-18 months between charges
- Lifts up to 3m x 3m blackout blinds
- Soft stop function
- Super quiet operation
- No unsightly charging cable

Product Certificates



Specifications - 12V DC

Type	2/31
Rated Torque (N.m)	2
Output Speed (rpm)	31
Nominal Voltage (V)	11.1
Running Time (Min)	∞
Protection Index (IP)	20
Maximum Turns (Turns)	∞
Weight kg	0.54
Length mm	550

WSERD50

Battery & solar motor

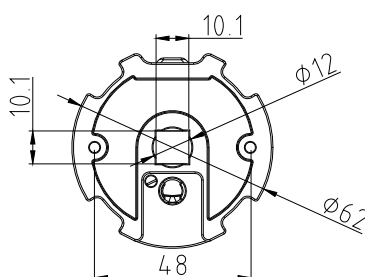
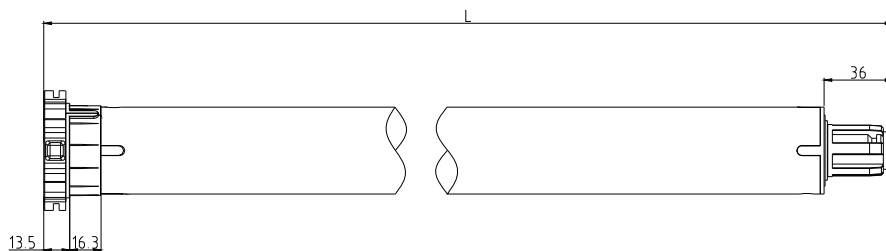
- 3rd intermediate limit position
- Low power consumption
- Soft start and soft stop
- Electronic Limit Switch



Roller Blind



Roller Shutter



Specifications - 12V DC

Type	15/12
Rated Torque (N.m)	15
Output Speed (rpm)	12
Nominal Consumption (W)	96
Nominal Voltage (V)	12
Nominal Current (A)	8
Maximum Power (W)	96
Protection Index (IP)	44
Total Length (mm)	565
Maximum Turns (Turn)	∞
Net Weight (Kg)	2.6



Product Certificates



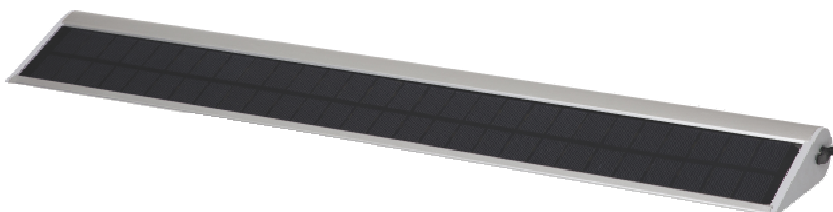
TYB002 Solar panel and battery pack for WSERD50 (Optional power source)

This unit is recommended for use with 50mm DC motors. It's a solar panel with 4400mAh storage capacity using rechargeable Lithium batteries. The batteries will be fully charged in 80 hours of direct sunlight, and when full, will hold enough charge for about 50 days of normal operation without further charging. In the event that the batteries are depleted by excessive use or poor solar panel positioning, the batteries can be recharged in a few hours by connecting an external charger to the unit.

- New tear drop design
- Monocrystalline silicone material
- Nominal capacity 4400 mAh
- Charging voltage 16.8v/1A, plug size 3.5mm*1.35mm
- Charging time 8 hours
- Output voltage 11.1v/4.5A
- Working temperature -10°C to 45°C
- Protection index IP55
- Dimensions 546mm x 90mm x 32mm

PLEASE NOTE:

**3m extension cables
are available**

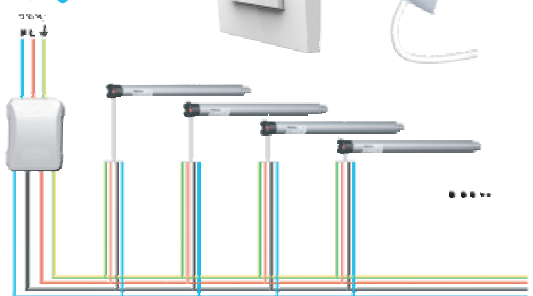
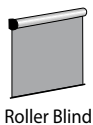
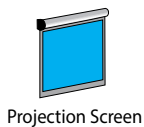


BEST CHOICE FOR AUTOMATION SYSTEM where electrically controlled 4 core motors are required

Limits may be set by using either the WSB01 limit setting tool or by using the button on the motor head.



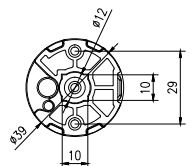
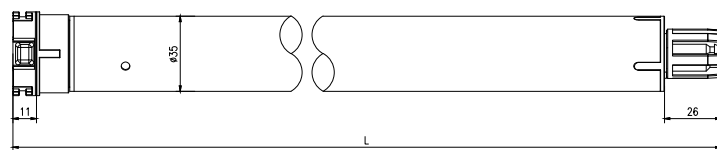
7
★ ★ ★
YEAR
WARRANTY
QUALITY ASSURED



Push Button Type

Electronic Limit Switch Parallel Connector Motor

35mm diameter



Specifications - 240V / 50Hz

Type	5/28
Rated Torque (N.m)	5
Output Speed (rpm)	28
Nominal Consumption (W)	116
Nominal Voltage (V)	240
Nominal Current (A)	0.49
Running Time (Min)	4
Protection Index (IP)	44
Total Length (mm)	560
Maximum Turns (Turn)	∞
Net Weight (Kg)	1.35

Product Certificates



BEST CHOICE FOR AUTOMATION SYSTEM
where electrically controlled
4 core motors are required

This motor is recommended for all external straight drop awning products.

Limits may be set by using either the WSB01 limit setting tool or by using the button on the motor head.

These motors cannot be protected or controlled by Sun/Wind or Motion sensors. Any protective features must be provided by the control system operating the motors.

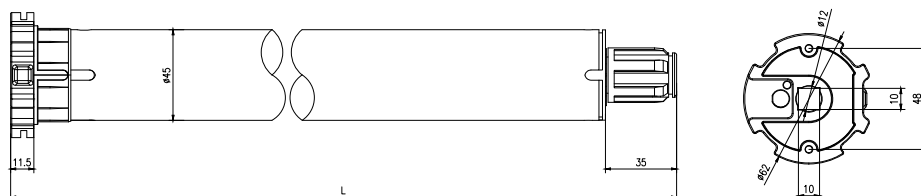


**7
★ ★ ★
YEAR
WARRANTY**

**QUALITY
ASSURED**

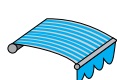
Push Button Type

Electronic Limit Switch Parallel Connector Motor
45mm diameter



Specifications - 240V / 50Hz

Type	10/27	30/17	50/13
Rated Torque (N.m)	10	30	50
Output Speed (rpm)	27	17	13
Nominal Consumption (W)	203	226	244
Nominal Voltage (V)	240	240	240
Nominal Current (A)	0.84	0.95	1.06
Running Time (Min)	4	4	4
Protection Index (IP)	44	44	44
Total Length (mm)	570	570	600
Maximum Turns (Turn)	∞	∞	∞
Net Weight (Kg)	2.05	2.20	2.30



Awning



Roller Blind



Roller Shutter



Product Certificates



WSEC50

Folding arm motor

7 year replacement warranty
Electronic limit switch
For use with building management systems
Parallel wiring compatible
Counter balanced noise suppression

13

Also referred to as "Cassette Awning" motors, these motors are designed to automatically set their inner limit based on tension.

The outer limit is set manually using the WSB01 limit setting tool and it will find its own inner stopping position by detecting the resistance as it reaches the fully closed position the first time it is closed. After this the motor will stop in this position after detecting an increased resistance of 25% while moving.

These motors cannot be protected or controlled by Sun/Wind or Motion sensors. Any protective features must be provided by the control system operating the motors.

BEST CHOICE FOR AUTOMATION SYSTEM
where electrically controlled
4 core motors are required

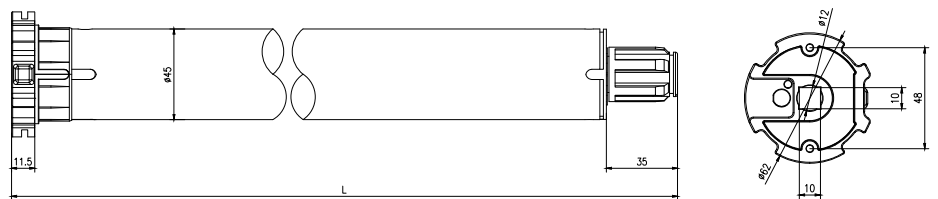


**7
★ ★ ★
YEAR
WARRANTY**
QUALITY
ASSURED

Push Button Type

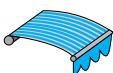
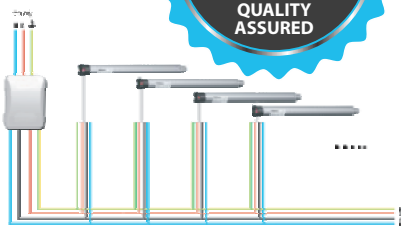
Electronic Limit Switch Parallel Connector Motor

45mm diameter



Specifications - 240V / 50Hz

Type	30/17	50/13
Rated Torque (N.m)	30	50
Output Speed (rpm)	17	13
Nominal Consumption (W)	226	244
Nominal Voltage (V)	240	240
Nominal Current (A)	0.95	1.06
Running Time (Min)	4	4
Protection Index (IP)	44	44
Total Length (mm)	570	600
Maximum Turns (Turn)	∞	∞
Net Weight (Kg)	2.20	2.30

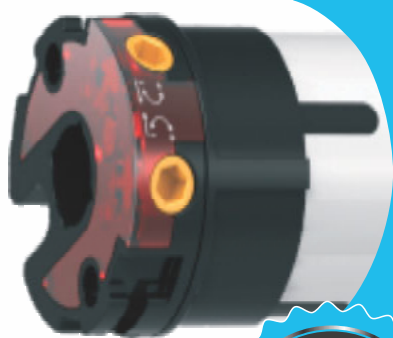


Awning

Product Certificates

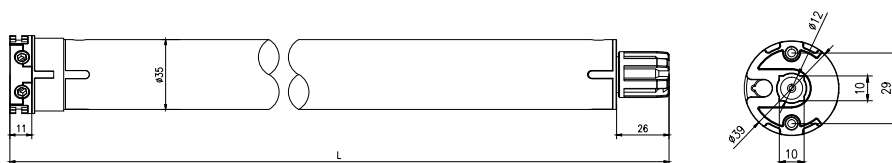


Unlike the WSEC Series motors, these motors cannot be parallel wired.



**7
★ ★ ★
YEAR
WARRANTY**

**QUALITY
ASSURED**



Standard Type Motor

35mm diameter

Specifications - 240V / 50Hz

Type	5/28
Rated Torque (N.m)	5
Output Speed (rpm)	28
Nominal Consumption (W)	116
Nominal Voltage (V)	240
Nominal Current (A)	0.49
Running Time (Min)	4
Protection Index (IP)	44
Total Length (mm)	480
Maximum Turns (Turn)	40
Net Weight (Kg)	1.34



Projection Screen Roller Blind

Product Certificates



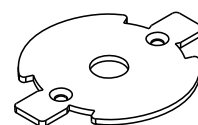
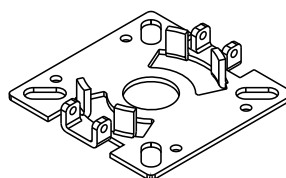
WSS50S 10/17 Short Motor

This is a standard mechanical limits motor like the WSS50 motors except that it is only 380mm long. This makes it suitable for many applications where the longer WSS50 won't fit, like roller shutters on very narrow bay windows for example.

To keep the size to a minimum, this motor has a different head to the standard WSS50 motors and as such requires a different mounting bracket as per the bracket image. This bracket will be supplied with the motor as standard.

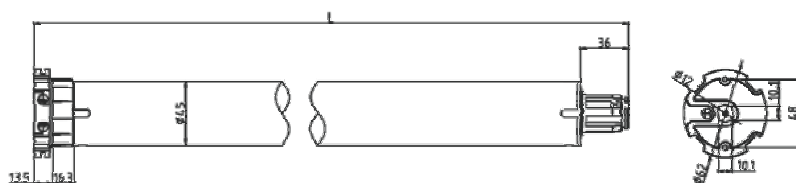
Also due to the short length, there is a maximum of 12 turns between limits. This equates to approximately 4 metres drop for a roller shutter using octagonal axle.

This motor is not recommended for internal roller blind use, due to limited mounting options and the limitation on the number of turns. Please see if the WSS40 motor on the previous page is short enough to meet your needs.



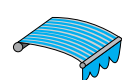
Standard Type Motor

45mm diameter



Specifications - 240V / 50Hz

Type	10/17 SHORT MOTOR	30/17	50/13
Rated Torque (N.m)	10	30	50
Output Speed (rpm)	17	17	13
Nominal Consumption (W)	155	226	244
Nominal Voltage (V)	240	240	240
Nominal Current (A)	0.68	0.95	1.06
Running Time (Min)	4	4	4
Protection Index (IP)	44	44	44
Total Length (mm)	380	455	480
Maximum Turns (Turn)	12	27	27
Net Weight (Kg)	1.86	2.40	2.47



Awning



Roller Blind



Roller Shutter



Product Certificates



WSS50 20/17 Grey Economy Motor

Alpha Grey is our new economy product aimed specifically at the roller shutter market, and designed to compete at a price point that the normal premium Alpha product can't reach. This is a standard mechanical limits motor, available either with or without a molex connector. Although the normal Alpha motors punch well above their weight in terms of performance, the Alpha Grey motors are not as over-engineered as the premium product but absolutely meet their specifications and are a great reliable motor. The warranty has been reduced to the normal industry standard of 5 years and in the cheaper version of the 2 Alpha Grey motors, the Molex connector has also been removed. This motor simply has a 3m tail without a connector.

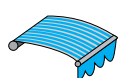
If you need a competitive edge on price but are tired of buying inferior motors through shutter suppliers that are often not even compliant to Australian standards, why not give Alpha Grey a try.



5
★ ★ ★
YEAR
WARRANTY
QUALITY
ASSURED



Available both with and without Molex connectors.



Awning



Roller Blind



Roller Shutter



Specifications - 240V / 50Hz

Type	20/17
Rated Torque (N.m)	20
Output Speed (rpm)	17
Nominal Consumption (W)	155
Nominal Voltage (V)	240
Nominal Current (A)	0.68
Running Time (Min)	4
Protection Index (IP)	44
Total Length (mm)	445
Maximum Turns (Turn)	27
Net Weight (Kg)	2.40

Product Certificates

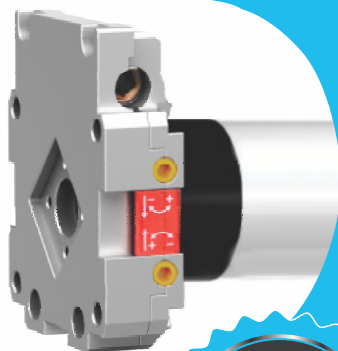


WSM50

Manual override

7 year replacement warranty
Standard type
Mechanical switch

17



Roller Shutter



Awning

Product Certificates



This is a mechanical limits motor, with the addition of manual override. This feature allows a roller shutter or awning to be operated by a crank handle in the event of a power failure. This feature is to allow for emergency operation only and is not suitable for general usage.

PLEASE NOTE: For eyelet and crank handle options please see page 46

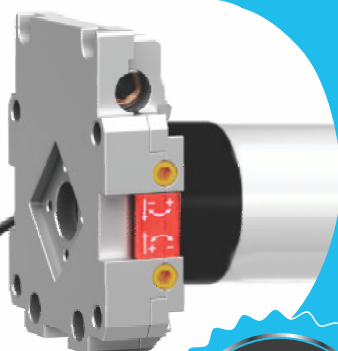
Specifications - 240V / 50Hz

Type	30/17	50/13
Rated Torque (N.m)	30	50
Output Speed (rpm)	17	13
Nominal Consumption (W)	226	244
Nominal Voltage (V)	240	240
Nominal Current (A)	0.95	1.06
Running Time (Min)	4	4
Protection Index (IP)	44	44
Total Length (mm)	625	625
Maximum Turns (Turn)	27	27
Override Turn Ratio	45:1	45:1
Net Weight (Kg)	3.1	3.3

WSME50

Manual override

7 year replacement warranty
Standard type
Mechanical switch
Built-in receiver



Roller Shutter



Awning

Product Certificates



This motor is a remote control version of a mechanical limits motor, with the addition of manual override. This feature allows a roller shutter or awning to be operated by a crank handle in the event of a power failure. This feature is to allow for emergency operation only and is not suitable for general usage.

PLEASE NOTE: For eyelet and crank handle options please see page 46

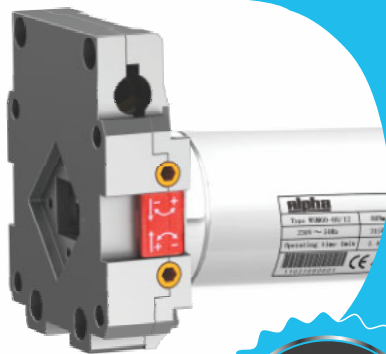
Specifications - 240V / 50Hz

Type	30/17	50/13
Rated Torque (N.m)	30	50
Output Speed (rpm)	17	13
Nominal Consumption (W)	226	244
Nominal Voltage (V)	240	240
Nominal Current (A)	0.95	1.06
Running Time (Min)	4	4
Protection Index (IP)	44	44
Total Length (mm)	740	740
Maximum Turns (Turn)	27	27
Override Turn Ratio	45:1	45:1
Net Weight (Kg)	4.1	4.3

WSM60

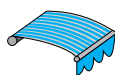
Manual override

7 year replacement warranty
Standard type
Mechanical switch



**7
YEAR
WARRANTY**
QUALITY
ASSURED

PLEASE NOTE:
for eyelet and
crank handle
options please
see page 46



Awning



Roller Door

Product Certificates



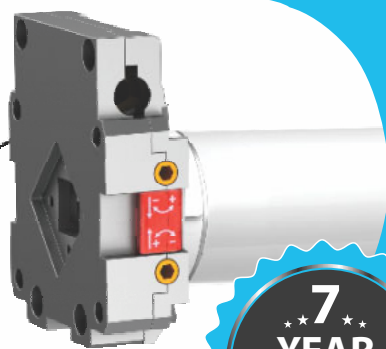
Specifications - 240V / 50Hz

Type	80/12	120/9	140/9
Rated Torque (N.m)	80	120	140
Output Speed (rpm)	12	9	9
Nominal Consumption (W)	370	488	488
Nominal Voltage (V)	240	240	240
Nominal Current (A)	1.6	2.15	2.15
Running Time (Min)	4	4	4
Protection Index (IP)	44	44	44
Total Length (mm)	630	660	660
Maximum Turns (Turn)	27	27	27
Net Weight (Kg)	6.15	6.18	6.18

WSME60

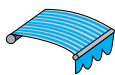
Manual override

7 year replacement warranty
Standard type
Mechanical switch
Built-in receiver



**7
YEAR
WARRANTY**
QUALITY
ASSURED

PLEASE NOTE:
for eyelet and
crank handle
options please
see page 46



Awning



Roller Door

Product Certificates



Specifications - 240V / 50Hz

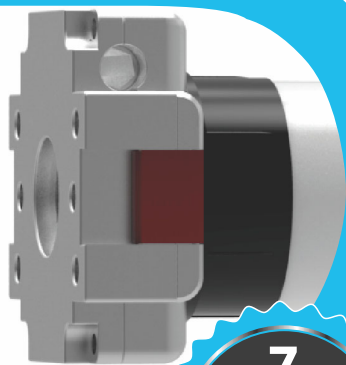
Type	80/12	140/9
Rated Torque (N.m)	80	140
Output Speed (rpm)	12	9
Nominal Consumption (W)	370	488
Nominal Voltage (V)	240	240
Nominal Current (A)	1.6	2.15
Running Time (Min)	4	4
Protection Index (IP)	44	44
Total Length (mm)	830	830
Maximum Turns (Turn)	27	27
Net Weight (Kg)	6.15	6.16

WSME50 ELECTRONIC

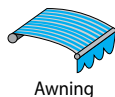
Manual override with electronic limits

7 year replacement warranty
Electronic limit switch
Built-in receiver
Wireless limit setting
External antenna

19



**7
YEAR
WARRANTY**
QUALITY
ASSURED



Awning

Product Certificates



This motor has manual override and electronic limits. Unlike most override motors, the electronic limits allow easy installation and programming, as well as the flexibility to be used in cassette systems that block access to typical mechanical limit mechanisms on conventional manual override motors.

Specifications - 240V / 50Hz

Type	50/13
Rated Torque (Nm)	50
Output Speed (rpm)	13
Nominal Consumption (W)	244
Nominal Voltage (V)	240
Nominal Current (A)	1.06
Running Time (Min)	4
Protection Index (IP)	44
Total Length (mm)	630
Maximum Turns (Turn)	∞
Net Weight (kg)	3.5

WSEB60

60mm motor

7 year replacement warranty
Built in receiver
Mechanical limits



**7
YEAR
WARRANTY**
QUALITY
ASSURED

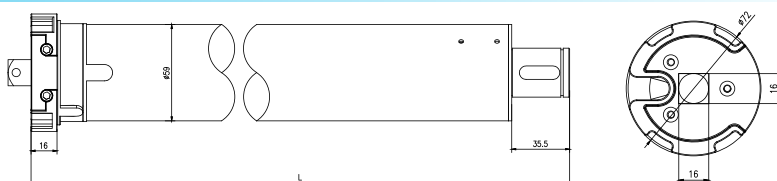


Awning



Roller Door

Product Certificates



The WSEB60 is a 60mm mechanical limits motor with a built in receiver for those super heavy duty jobs.

Specifications - 240V / 50Hz

Type	80/12	120/9
Rated Torque (N.m)	80	120
Speed (RPM)	12	9
Nominal Consumption	370	488
Nominal Voltage (V) AC	240	240
Nominal Current (A)	1.6	2.15
Running Time (Min)	4	4
Protection Index (IP)	44	44
Total Length (mm)	710	712
Maximum Turns	27	27
Net Weight (Kg)	4.75	4.76



The Alpha Curtain System

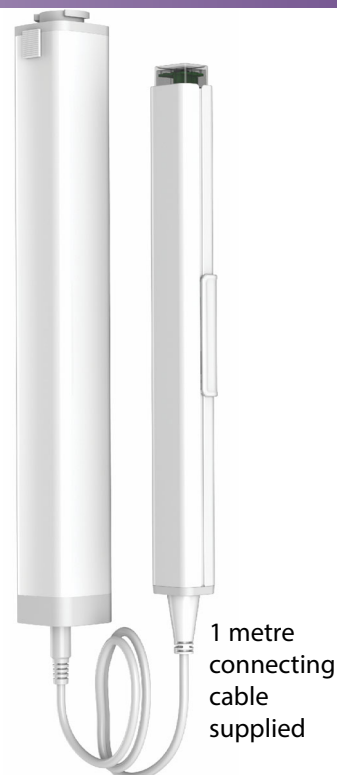
WSCMJ AC curtain motor



WSCMI Lithium battery curtain motor and wall mount battery pack



**ALDC
charger required**

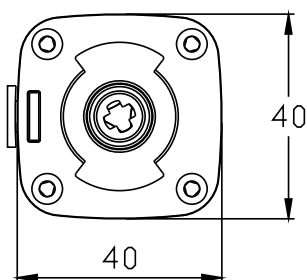


1 metre
connecting
cable
supplied

This new curtain motor replaces the previous WSCME version which is no longer available. Like its predecessor, it's available in both AC (WSCMJ) and DC (WSCMI) versions. Although very similar, there are a few main differences between the AC and DC variants. Both are remote control motors that are compatible with all Alpha controllers and our Neo App. Dry contact control is also available on both for use with switches or relays. Both also can be started by hand, have auto limits setting, and have the same pulling capacity of 50kg. Both also allow the curtain to be drawn by hand if power is disconnected.

The primary differences are as follows:

- Slightly slower run speed for the DC motor 15cm second vs 18cm second
- AC version has RS-485 control, whereas the DC version does not
- AC version comes with normal tail and molex connector
- DC version comes with a wall mount cradle for the battery pack and a removable battery for easier charging



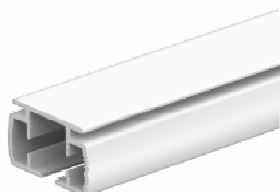
Product Certificates



Specifications

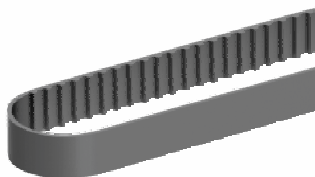
Type	AC	DC
Rated Torque (N.m)	2	2
Maximum Pulling Weight (kg)	50	50
Running Speed (cm per second)	18	15
Nominal Voltage (V)	240	12
Nominal Current (A)	0.47	4
Running Time	∞	∞
Protection Index (IP)	20	20
Total Length (mm)	300	250
Maximum Turns	∞	∞
Net Weight (Kg)	0.92	0.66
RS-485 Compatible	Yes	No
Relay or Switch Control	Yes	Yes

CMAT



CURTAIN TRACK
motorised aluminium track
2m, 3m, 4m & 6m lengths, white

CMA1



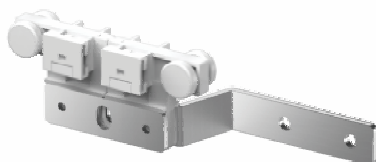
DRIVE BELT
with high strength non-corrosive
steel wire

CMA2J



DRIVE UNIT/IDLE
2 per track

CMA3
(A or B)



MASTER CARRIER
CMA3A - Rigid master carrier (**STRAIGHT TRACK ONLY**)
CMA3B - Bendable master carrier (**FOR USE WITH CORNERS**)
1 piece for one side opening
2 pieces for centre opening

CMA4



END STOP WITH HOOK

CMA5



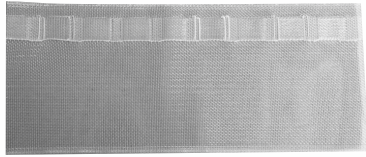
RETURN HOOK
2 pieces per track

CMA6



RUNNER
8 pieces required per metre

CMA7



RIPPLE FOLD TAPE
white

CMA8
(A or B)



RIPPLE FOLD CARRIER WITH PENDANTS
CMA8A - 80mm spacing (NOT SUITABLE FOR USE WITH CORNERS)
CMA8B - 60mm spacing

CMA9
BASIC
TRACK JOINER



CMA9A
PREMIUM
TRACK JOINER



Almost invisible, super precise connector

CMA10/90
CORNER JOINER
connector for 2 tracks
at 90 degree angle



CMA10/135
CORNER JOINER
connector for 2 tracks
at 135 degree angle

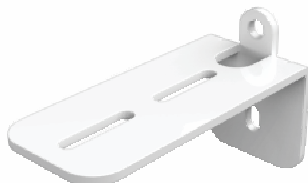


CMA11



MOUNTING CEILING BRACKETS

CMA12



WALL BRACKETS
base only, requires an additional CMA11
per bracket

CMA13



EXTENDED DOUBLE WALL BRACKET
base only, requires 2x CMA11 per bracket

ALPHA^{NEO}App integration
made easy

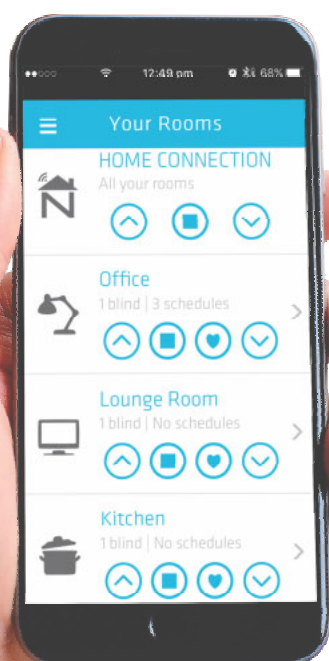
Control4

SAVANT



This app is extremely versatile and easy to set up. It controls motorised products individually, or by area, or the whole house at once from anywhere in the world with an internet connection. All functionality can be scheduled to operate automatically.

Simply purchase the link box and download the free app for either Android or Apple. This app is compatible with all Alpha remote control motors. There is no limit to the number of control devices you can connect. There are 30 control groups (rooms) available and you can add up to 8 blinds per group. Additionally, you can setup up to 25 schedules to automate functionality.



Specifications

Type	
Nominal Voltage (V)	5
Nominal Current (A)	1
Frequency MHz	433.92
Code Type	Rolling
Power Requirements	5V DC
Number of Channels	Max 240
Total Length (mm)	75
Total Width (mm)	60
Total Height (mm)	25



The Pioneer Series

The Pioneer series remotes are a sleek, yet practical design featuring silicone edges for drop protection. Options of 1, 4, 8 & 16 channel transmitters give you enormous flexibility without being overly complicated. The WSRE103 models also feature an easy to read LCD display and a multi-channel function to further simplify the end-user experience. The Alpha remote control system applies a 66 rolling code program with 268 million possible combinations which virtually eliminates any chance of programming duplication. All Alpha remotes and receivers are inter-compatible.



RE101

Specifications

Channels	1
Frequency (MHz)	433.92
Codes	Rolling
Wall Mount	Yes



RE102

Specifications

Channels	4
Frequency (MHz)	433.92
Codes	Rolling
Wall Mount	Yes

With the 4, 8 & 16 channel remotes you can control 4, 8 or 16 different motors or receivers separately or any group among them.

The 4T is a 4 channel variant which can set up 8 different open/close times and also select days of the week.



RE103

Specifications

Channels	4, 8, 16, 4T
Frequency (MHz)	433.92
Codes	Rolling
Wall Mount	Yes

Keyring Remote



RE110

Specifications

Channels	1
Frequency (MHz)	433.92
Codes	Rolling



The Navigator Series The Navigator series remotes are the latest offering from the R&D team. They have delivered an elegant and simple design featuring stainless steel edge trim and a near-invisible magnetic wall mount. With all the options of the Pioneer series and almost identical operation, the Navigator series remotes are an excellent addition to our range.



RE301

Specifications

Channels	1
Frequency (MHz)	433.92
Codes	Rolling
Magnetic Wall Mount	Yes



RE302

Specifications

Channels	5
Frequency (MHz)	433.92
Codes	Rolling
Magnetic Wall Mount	Yes



RE303

Specifications

Channels	4, 8, 16 1T, 4T
Frequency (MHz)	433.92
Codes	Rolling
Magnetic Wall Mount	Yes

With the 4, 8 & 16 channel remotes you can control 4, 8 or 16 different motors or receivers separately or any group among them.

The 1T & 4T are single and 4 channel variants, either of which can set up 8 different open/close times and also select days of the week.



Remote Controls

3 Series Plus

27

**NEW
PRODUCT**



306A

The 306A is 2 channel remote with separate button sets for each channel for super simplicity.

Specifications

Channels	2
Frequency (MHz)	433.92
Codes	Rolling
Magnetic Wall Mount	Yes



301-i

The 301i is a single channel remote, but with the clever function of being able to select 25%, 50% and 75% positions between the set limits. This function works with all Alpha WSER and WSERD series motors.

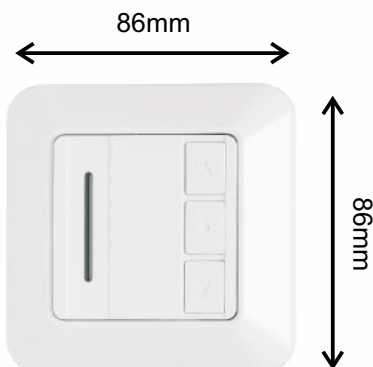
Specifications

Channels	1
Frequency (MHz)	433.92
Codes	Rolling
Magnetic Wall Mount	Yes





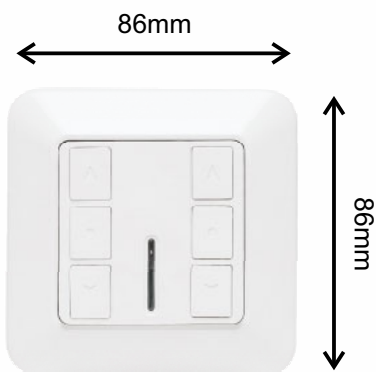
RE201



Specifications

Channels	1
Frequency (MHz)	433.92
Codes	Rolling
Wall Mount	Yes

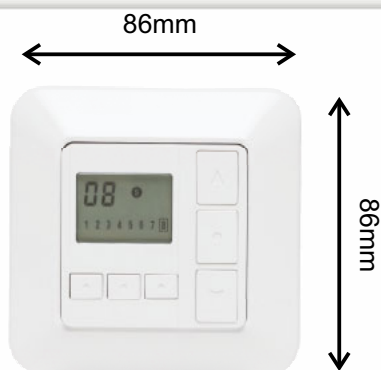
RE202



Specifications

Channels	2
Frequency (MHz)	433.92
Codes	Rolling
Wall Mount	Yes

RE203-8C

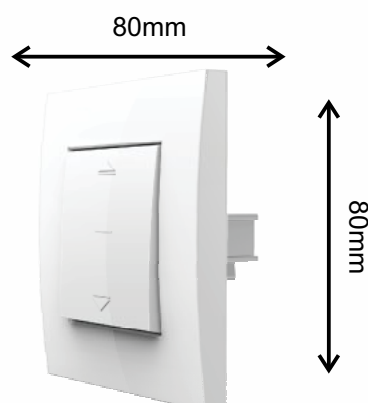


Specifications

Channels	8
Frequency (MHz)	433.92
Codes	Rolling
Wall Mount	Yes

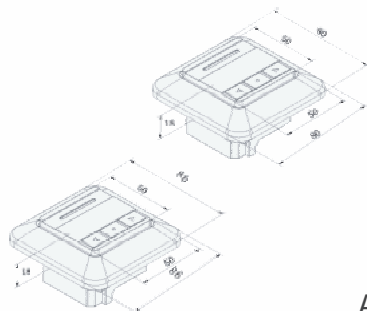
Hard Wired Wall Switch

A3623



Mechanical locking paddle switch for WSEC & WSS Series motors

RC201

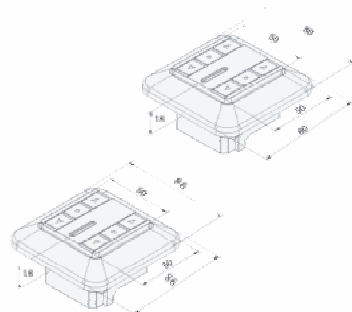


Specifications

Connect with motor	up to 3 units
Frequency (MHz)	433.92
Codes	Rolling
Receiver Power	400W
Voltage	230V 50Hz

Able to operate with a maximum of 15 remotes

RC202



Specifications

Connect with motor	2 units
Frequency (MHz)	433.92
Codes	Rolling
Receiver Power	600W
Voltage	230V 50Hz

Able to operate with a maximum of 15 remotes

RC001



Receiver for 60mm motors. Control buttons on side for up, down and stop.

Specifications

Connect with motor	1 unit
Frequency (MHz)	433.92
Codes	Rolling
Receiver Power	800W
Voltage	230V 50Hz

Able to operate with a maximum of 15 remotes

RC006

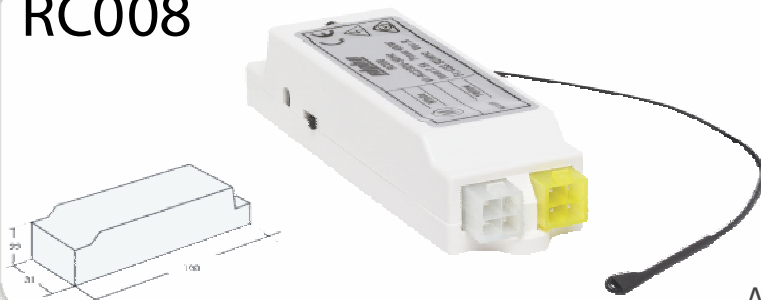


Specifications

Connect with motor	1 unit
Frequency (MHz)	433.92
Codes	Rolling
Receiver Power	400W
Voltage	230V 50Hz

Able to operate with a maximum of 15 remotes

RC008



Specifications

Connect with motor	1 unit
Frequency (MHz)	433.92
Codes	Rolling
Receiver Power	400W
Voltage	230V 50Hz

Able to operate with a maximum of 15 remotes

RE-DCE

Relay controlled remote



**AUTOMATION
SYSTEM CONTROL
OF REMOTE
CONTROL
MOTORS**

This device is a single channel remote control that plugs into a power point for permanent power and is controlled by connecting the device to relays in a control system or other switches. There are 4 wires connecting this item: common, up, stop and down. When the common wire comes into contact with any of the control wires, the function for that wire will be sent out to any WSER series motors or remote receivers this device is assigned to.

This device allows remote control Alpha motors to be operated by a huge variety of building management systems, automation equipment, press buttons or key turn switches as well as a remote control. This device is not practical for use in setting up the motors it will control. This must be done with a standard remote and the RE-DCE can be assigned to the motor separately for additional control options.

When planning your job with this item, only allow for connection to relays or switches that make contact as long as a button or switch is pressed and release automatically afterwards. Do not use rotary switches or switches that lock into position as the item will continue to send out the signal for as long as contact is made. This could produce unwanted results.



Product Certificates



RE-DCE

Specifications

Channels	1
Frequency (MHz)	433.92
Codes	Rolling
Wall Mount	Yes
Voltage	240V 50Hz

RS005 Motion Sensor

for folding arm awnings

31

Available in black or white



This item attaches to the front channel of a folding Arm Awning at either end. It measures the angle of the front bar and the amount of movement created by wind. When the sensitivity setting is reached, it sends a signal to the awning to close.

When used with a Folding Arm or Cassette Awning motor, it will send a pulse to the motor a few times an hour telling the motor it's there and working. If the motor stops detecting this pulse due to flat batteries or failure, it will automatically retract the awning after about half an hour to both protect the awning and to alert the owner that the motion sensor is not working. Once the pulse is restored (usually by installing new batteries) normal operation will resume.



Although this item will control a Universal motor, the Universal motor does not have the extra protective functions mentioned above if the item stops sending the pulse. The motion sensor is a more reliable method of protection than the Sun/Wind sensors as it responds to actual physical movement of the front bar and not the wind speed detected by a device mounted nearby.

This unit has 9 pre-determined sensitivity settings.

Cannot be used in conjunction with Sun/Wind Sensors.



Product Certificates



RS005 Specifications

Frequency (MHz)	433.92
Codes	Rolling
Protection Index	IP44
Power	2x AAA Batteries

Sun and Wind Sensors

wired & wireless

These devices
cannot be used in
conjunction with
Motion Sensors

- Programmable with 5 wind speed and 9 light intensity settings
- Usable as sun and wind sensor where wind overrides sun
- Sun sensor can be disabled if required
- For use with WSER Series motors

RS001

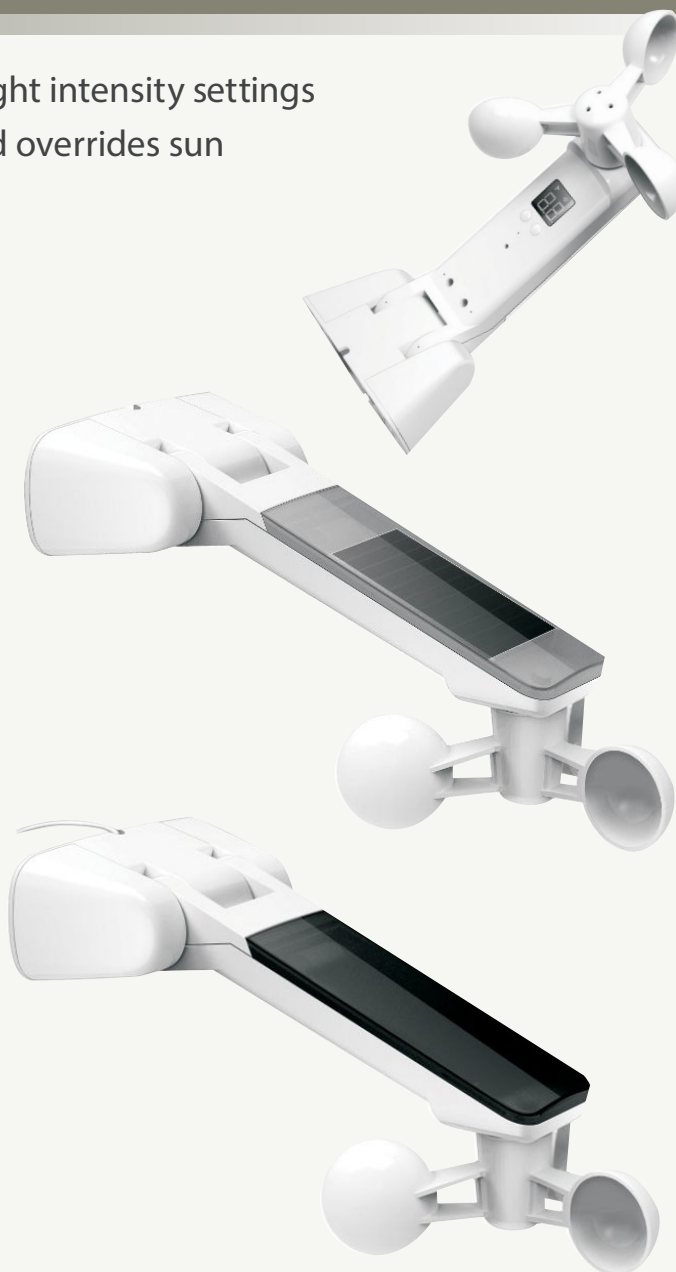
Specifications

Frequency (MHz)	433.92
Codes	Rolling
Protection Index	IP44
Display	LED
Power	Solar Panel & Rechargeable Battery

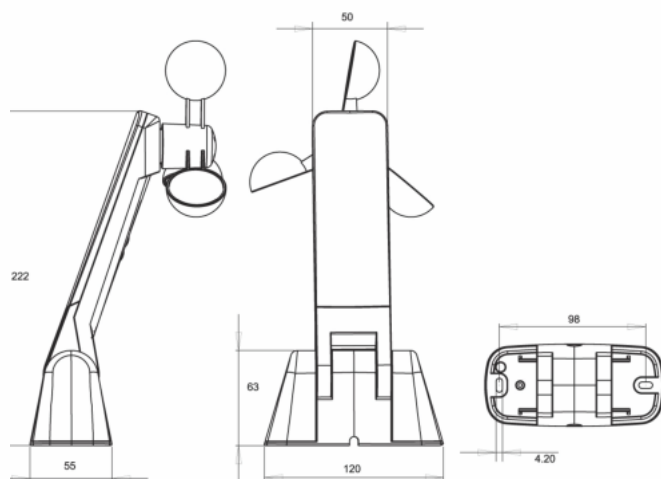
RS002

Specifications

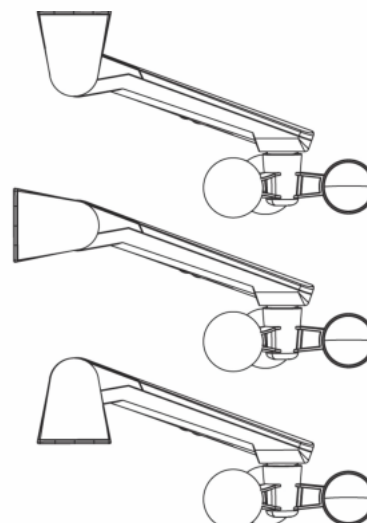
Frequency (MHz)	433.92
Codes	Rolling
Protection Index	IP44
Display	LED
Power	5V DC Power Supply (supplied)



Dimension Drawing



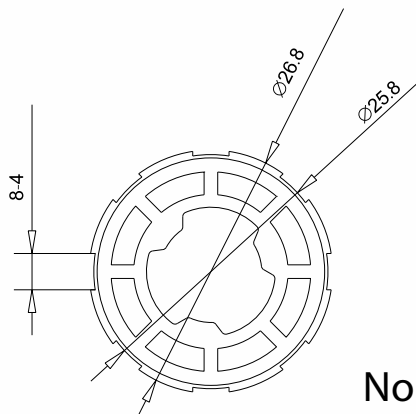
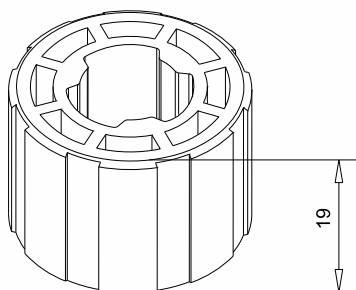
Installation Drawing





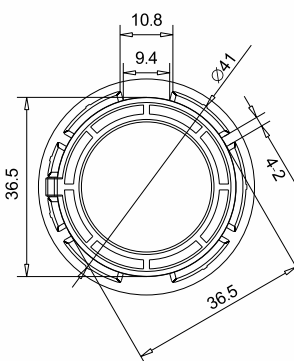
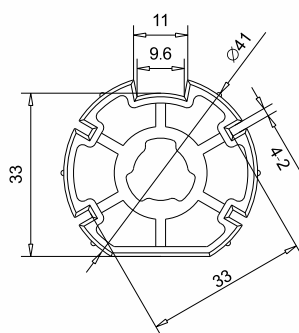
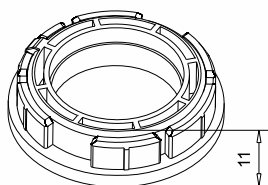
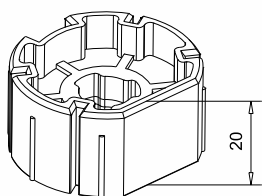
Accessories

A2201

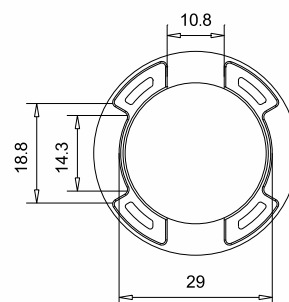
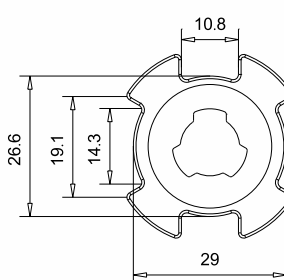
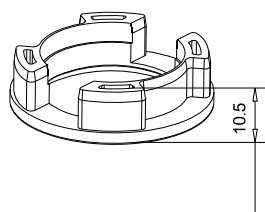
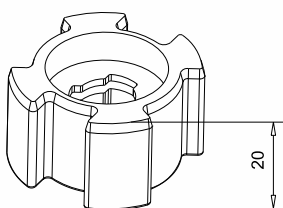


No crown required

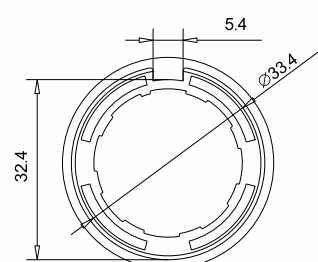
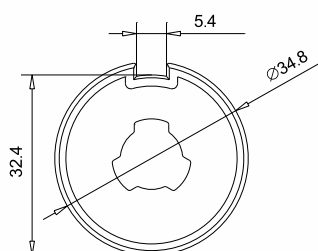
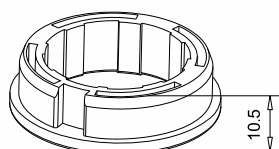
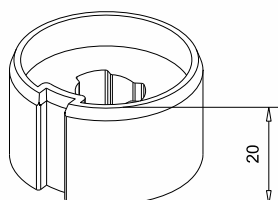
A2202



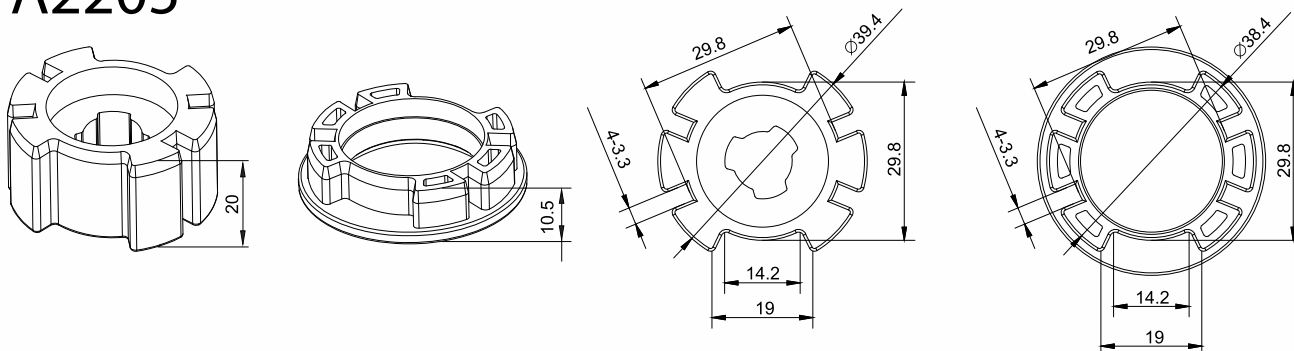
A2203



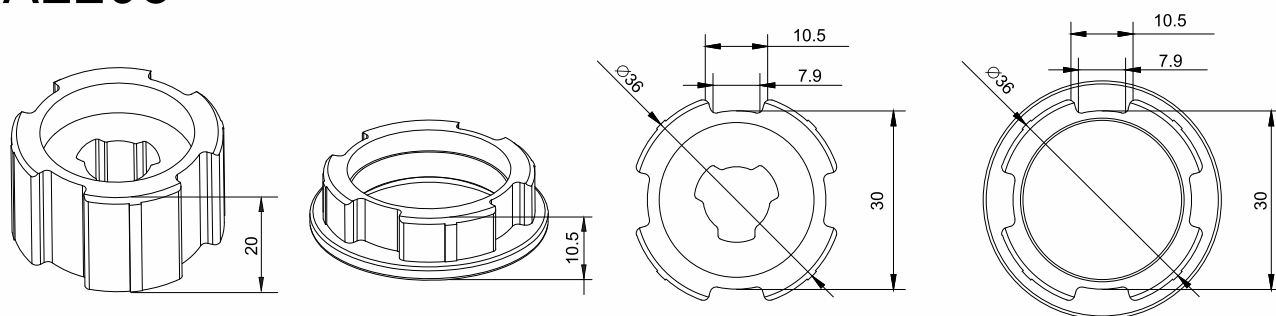
A2204



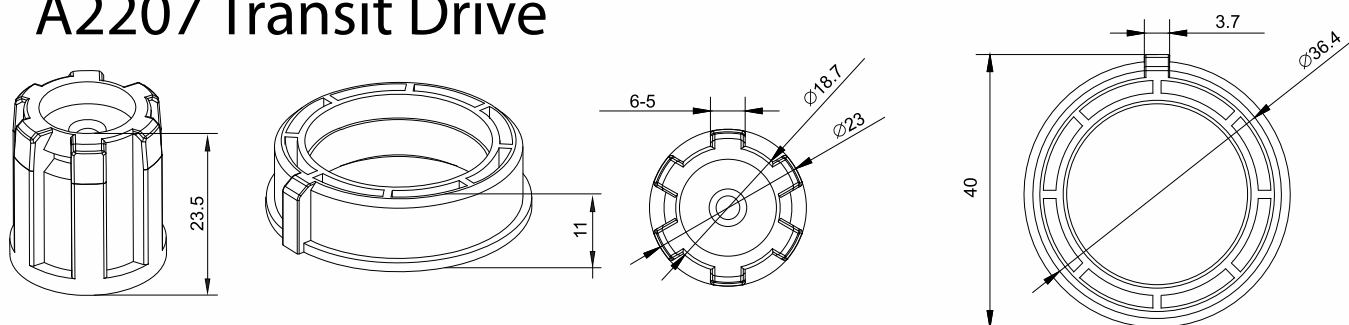
A2205



A2206

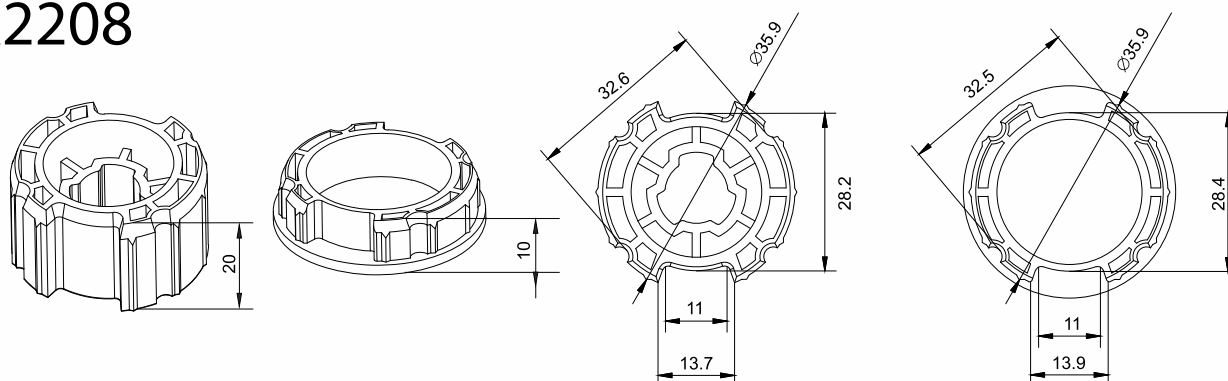


A2207 Transit Drive

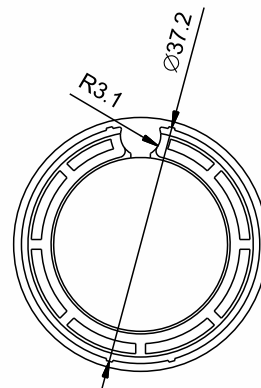
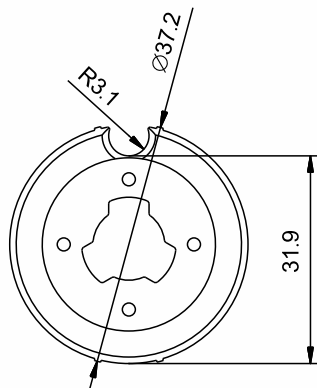
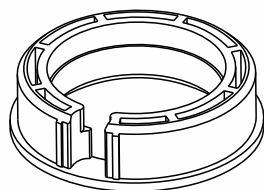
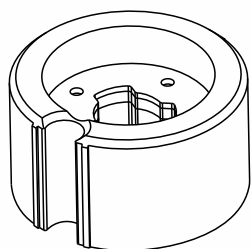


These are adaptors to allow connection of our 35mm motor fittings onto a 25mm motor.

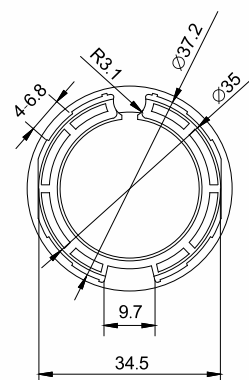
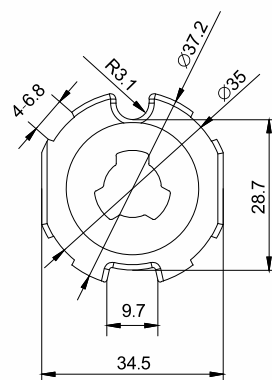
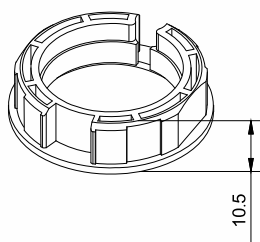
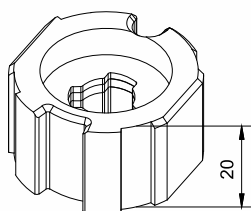
A2208



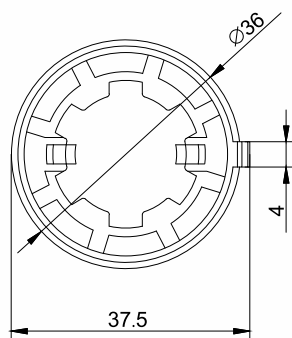
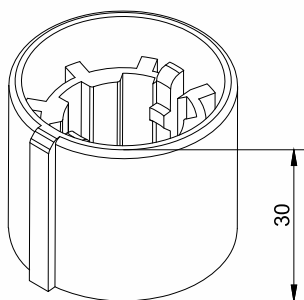
A2213



A2214

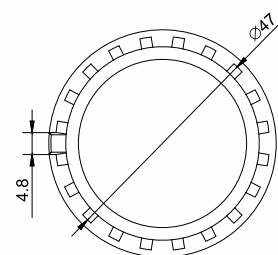
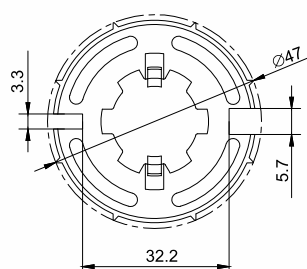
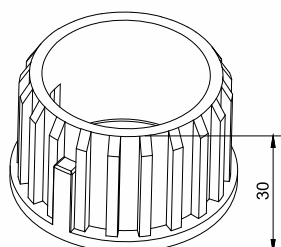
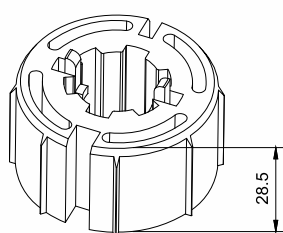


A2305

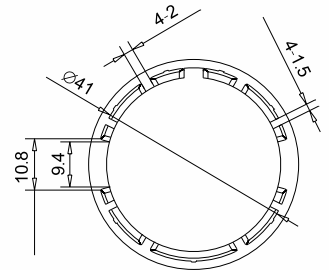
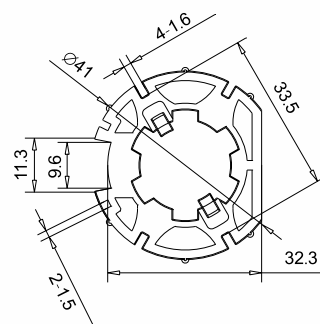
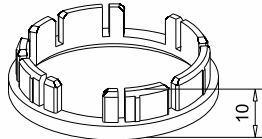
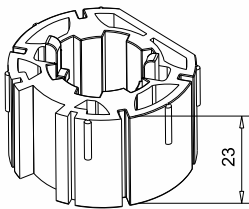


No crown required

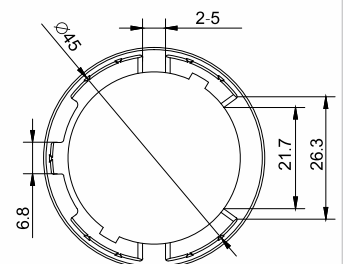
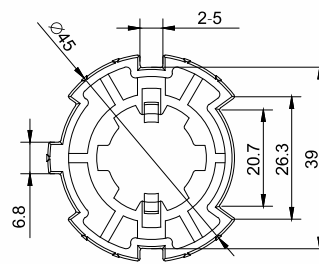
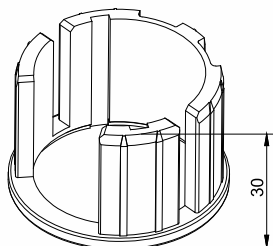
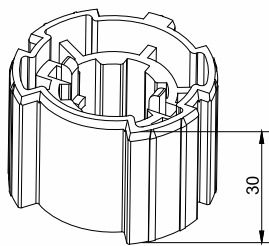
A2307



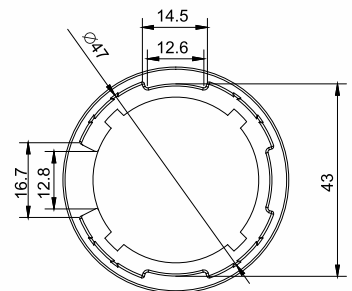
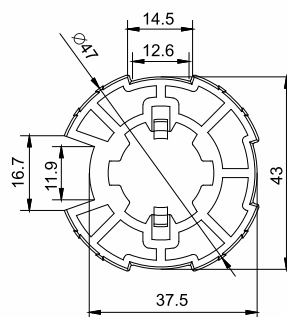
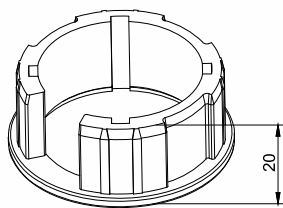
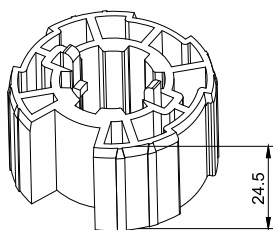
A2310



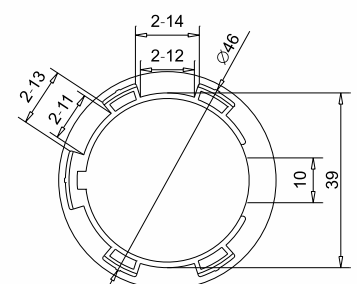
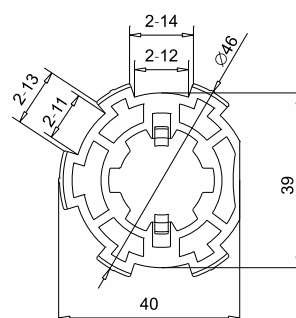
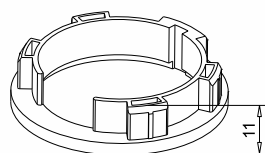
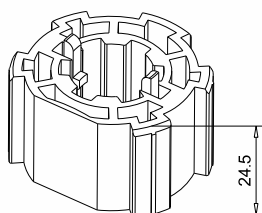
A2313



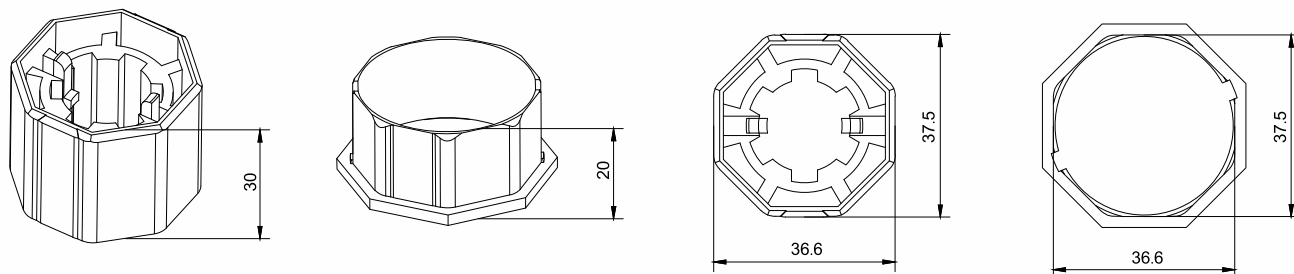
A2314



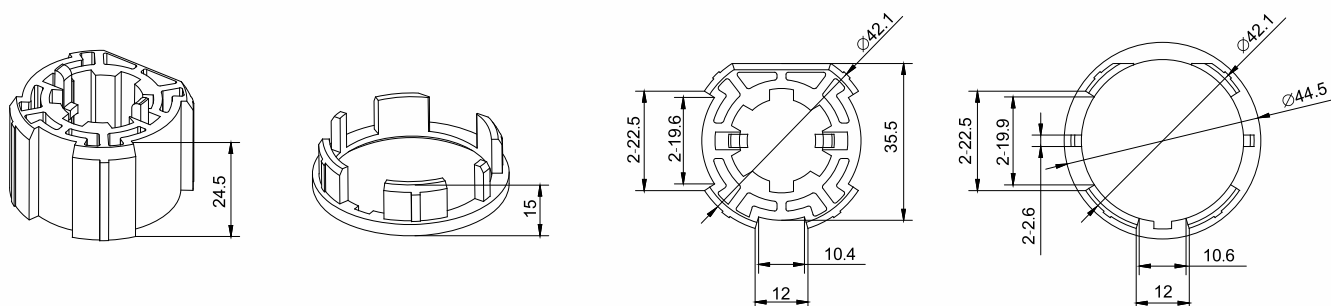
A2315



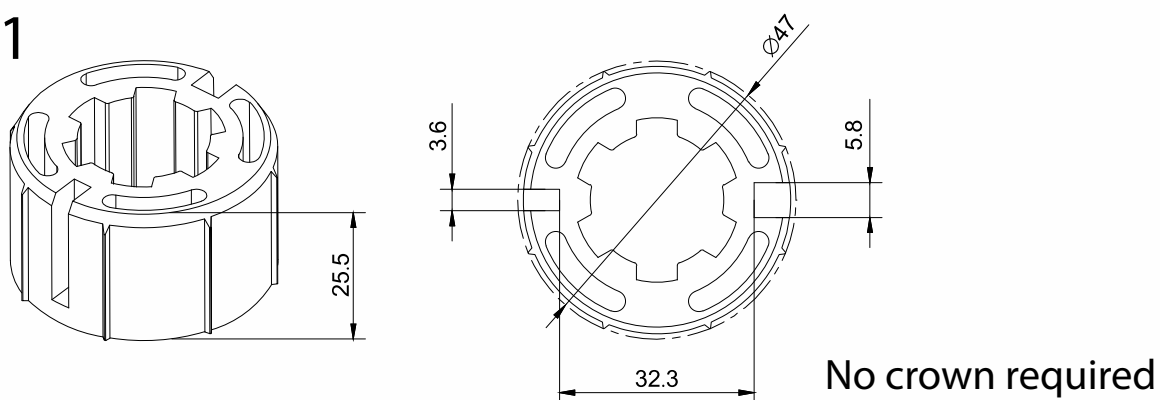
A2320



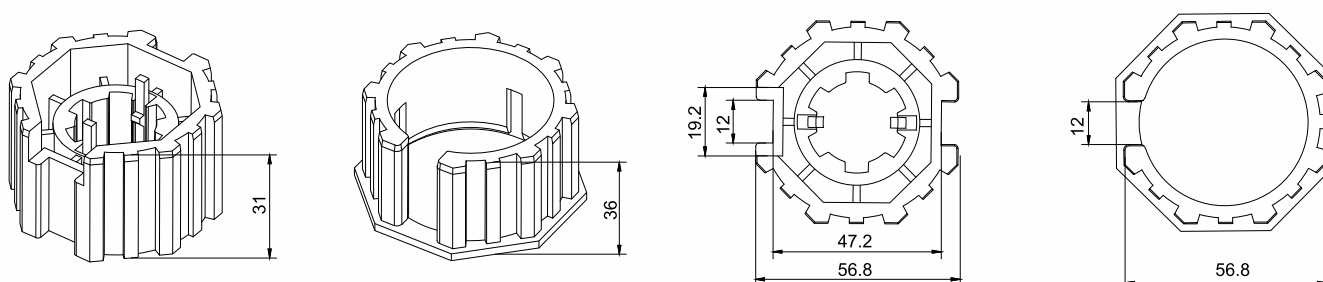
A2334



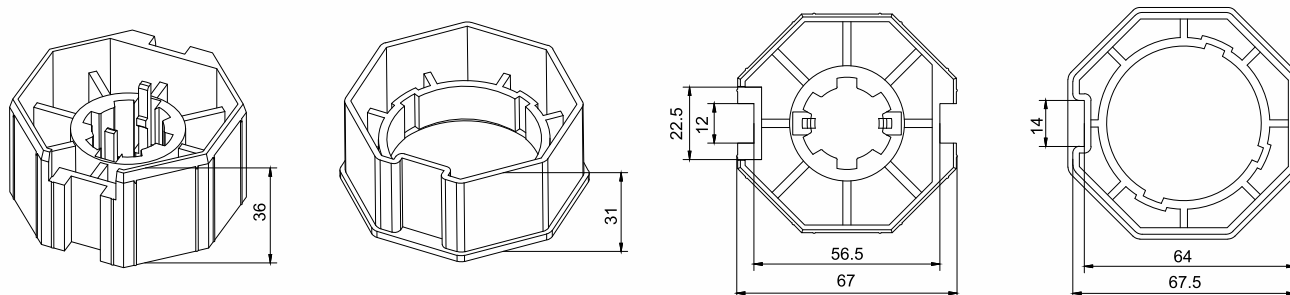
A2401



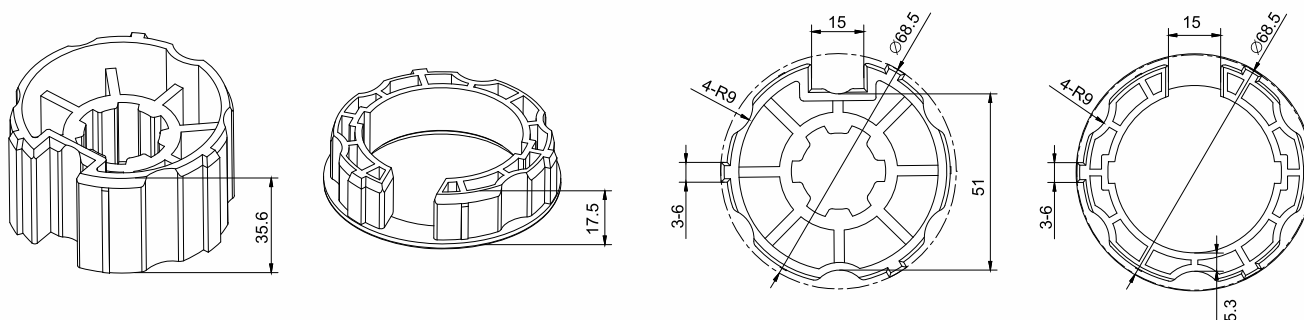
A2404



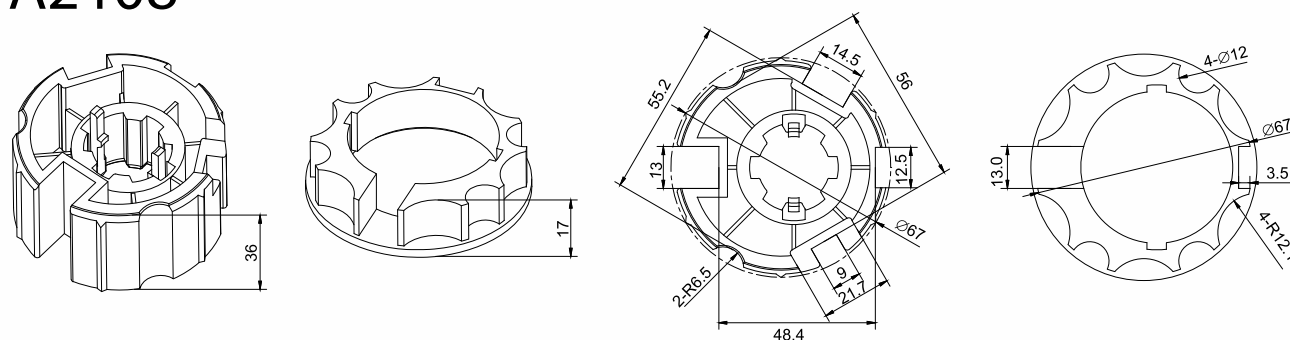
A2406



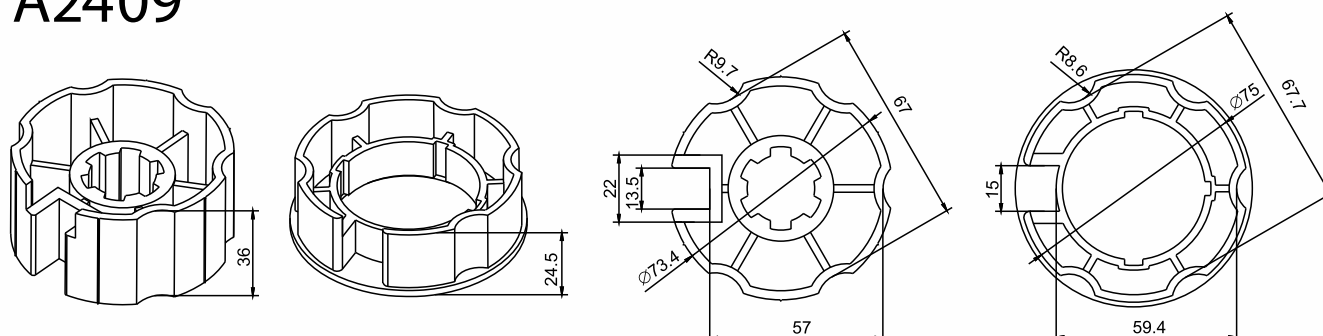
A2407



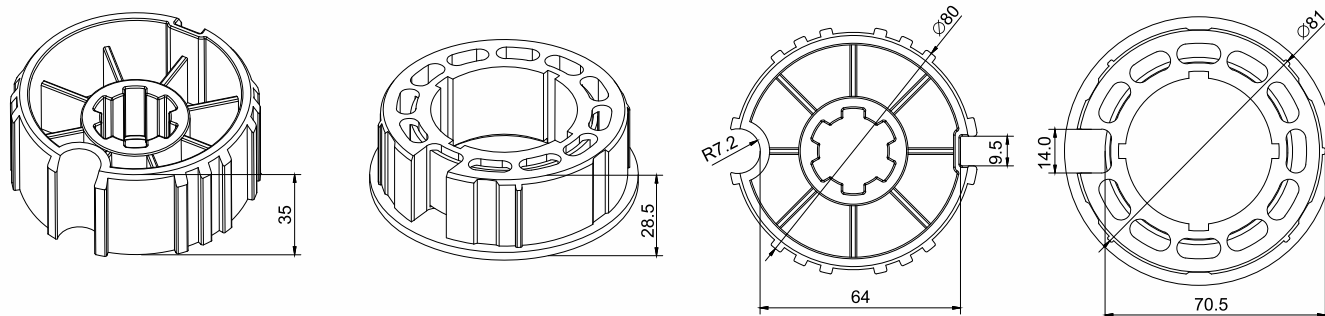
A2408



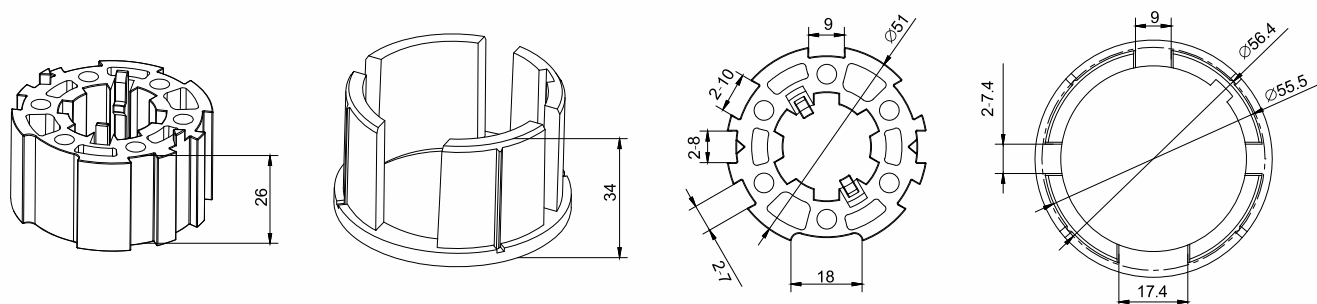
A2409



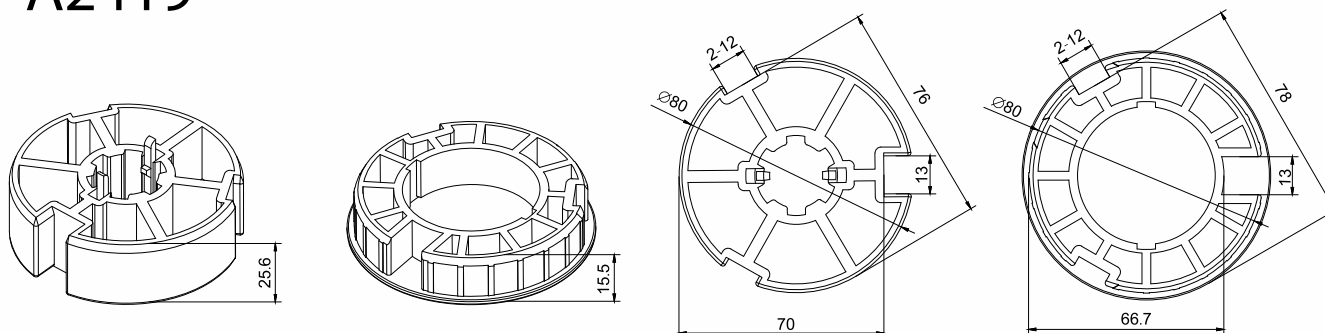
A2410



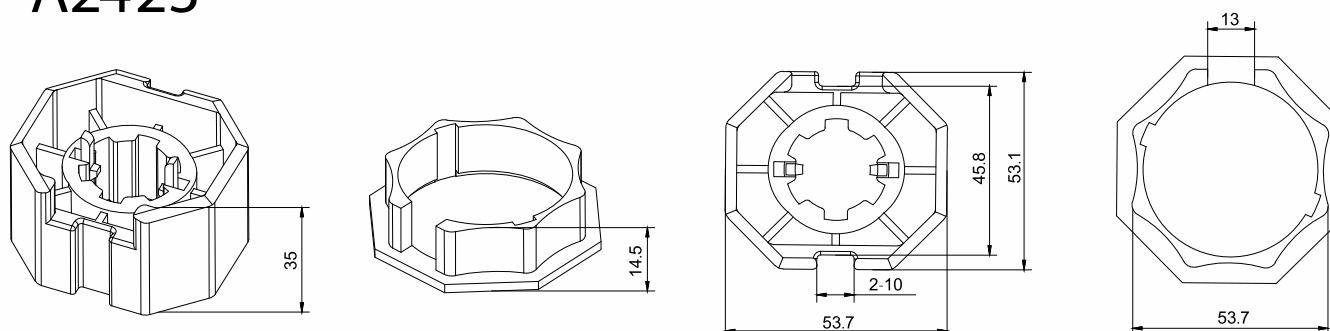
A2415



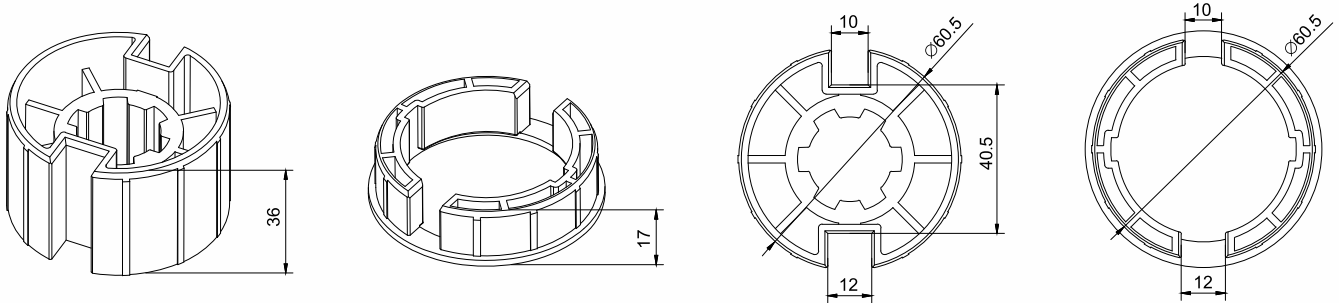
A2419



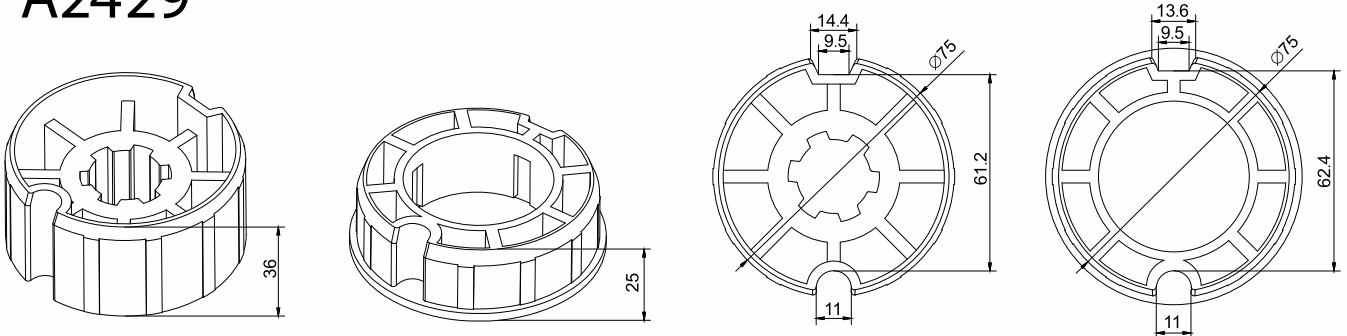
A2423



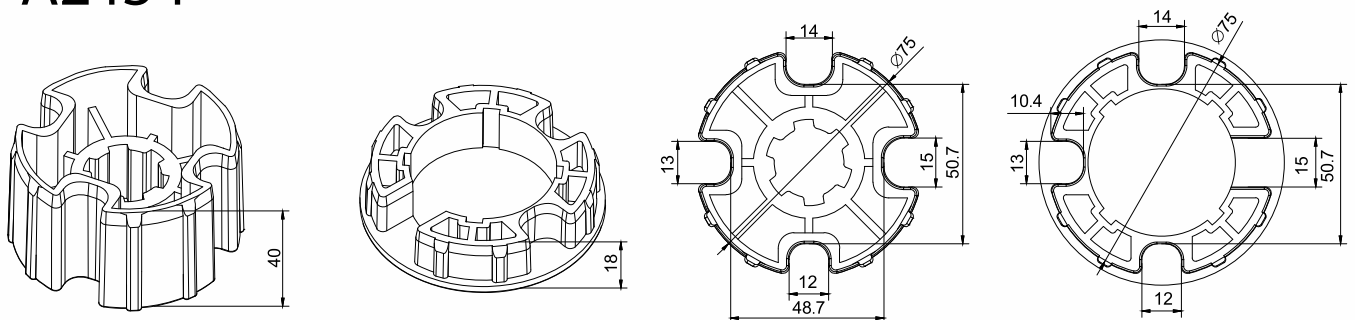
A2424



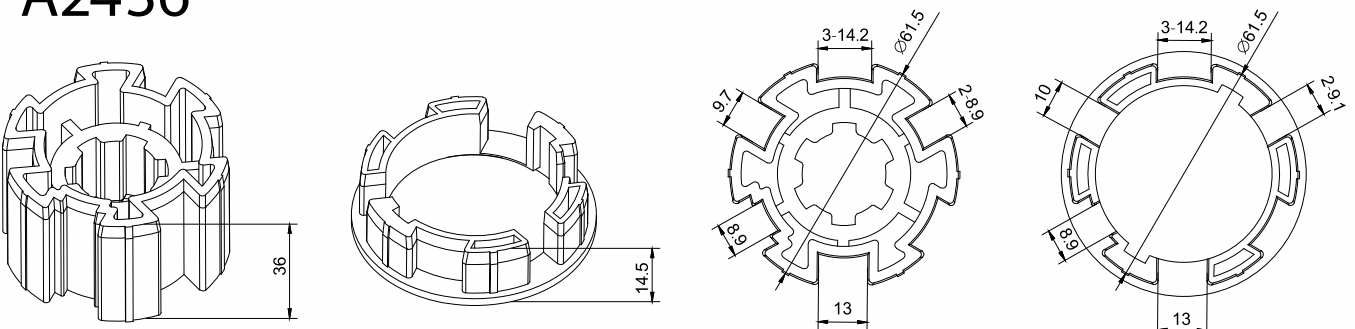
A2429



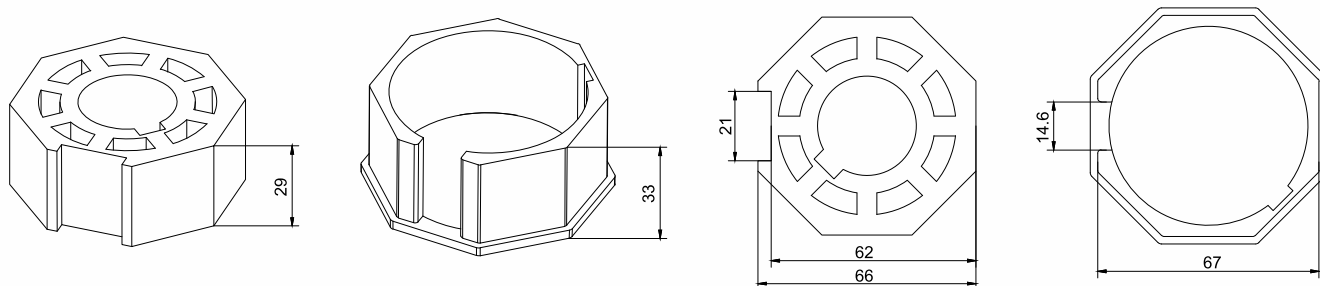
A2434



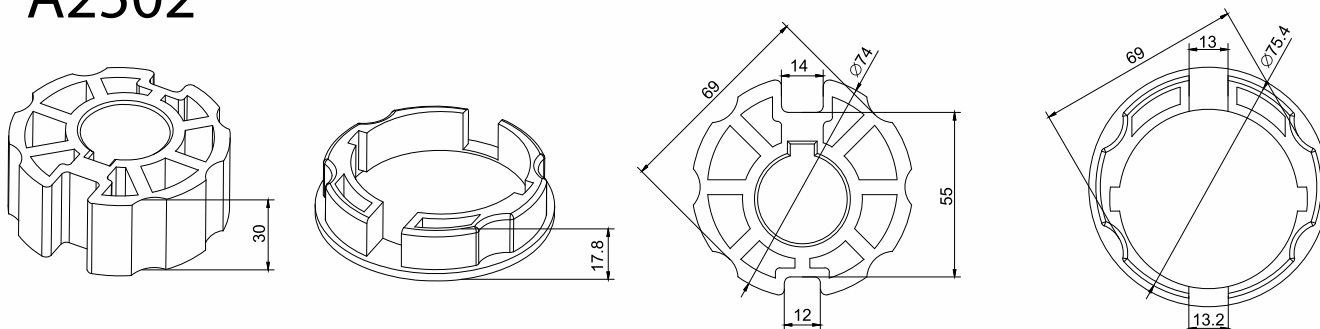
A2436



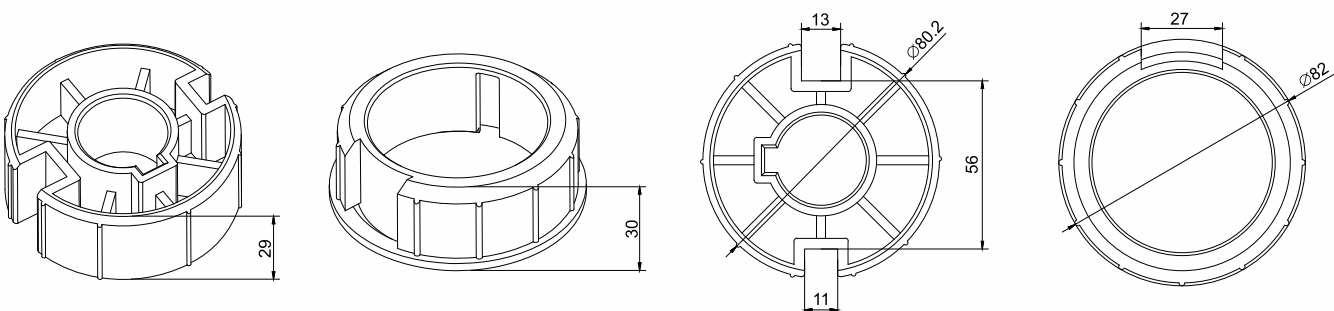
A2501



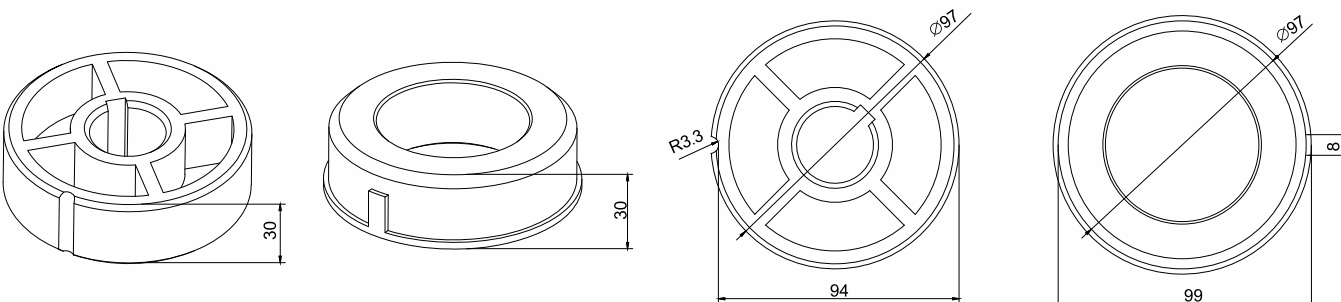
A2502



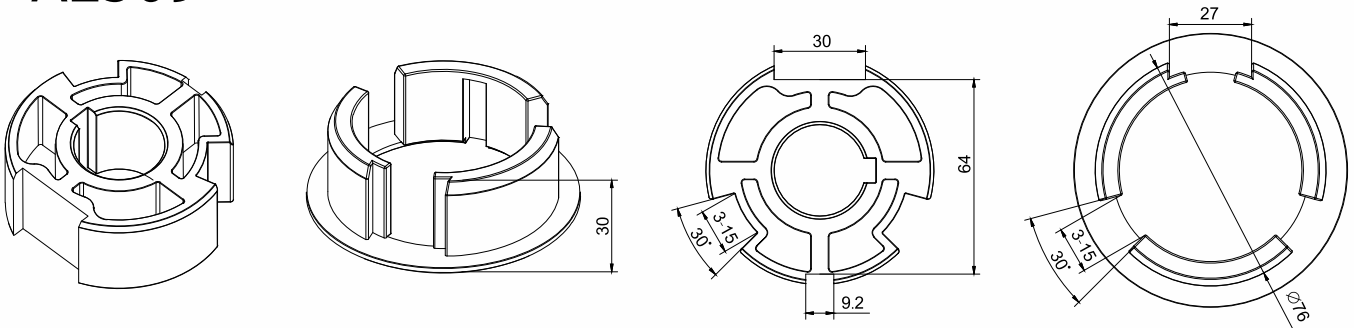
A2503



A2505

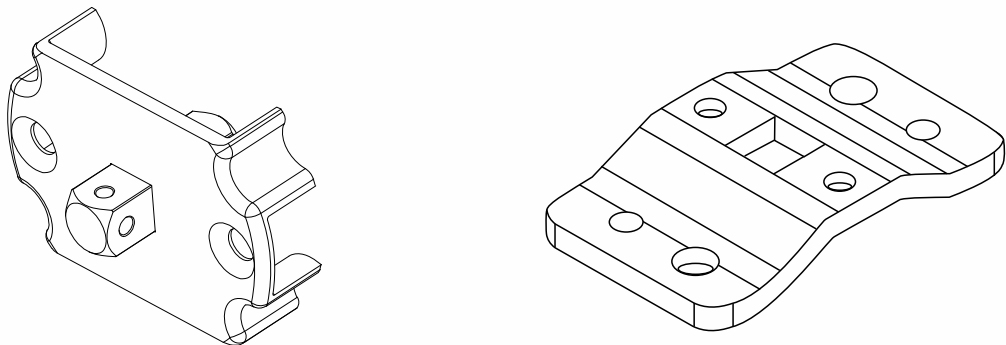


A2509

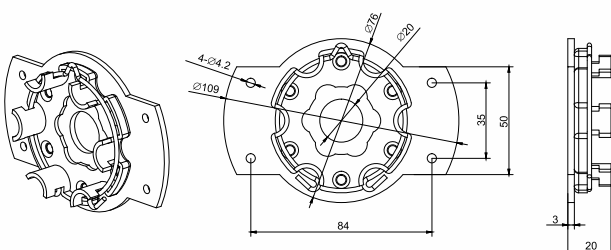


Brackets

A3438 Motor bracket and mounting plate for star head motor only.

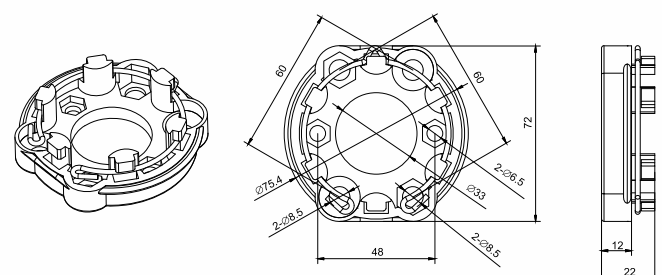


A3439



Quick release mounting plate to secure star head motor.



A3440



Quick release mounting plate to secure star head motor.

Technical drawing of a circular plate with six holes. The drawing includes a perspective view of the plate with two screws and a top-down view with detailed dimensions. Dimensions include a diameter of 100, hole diameter of 29 ± 0.1 , hole spacing of 32.2 ± 0.05 , and a distance of 39.7 ± 0.05 from the center to the edge. A note specifies 6 - $\varnothing 4 \sqrt{\varnothing 8 \times 90^\circ}$.

Two views of a circular metal part. The left view shows the top face with a central rectangular slot and six circular holes arranged in two rows of three. The right view shows the bottom face, which is similar but with a different internal structure.

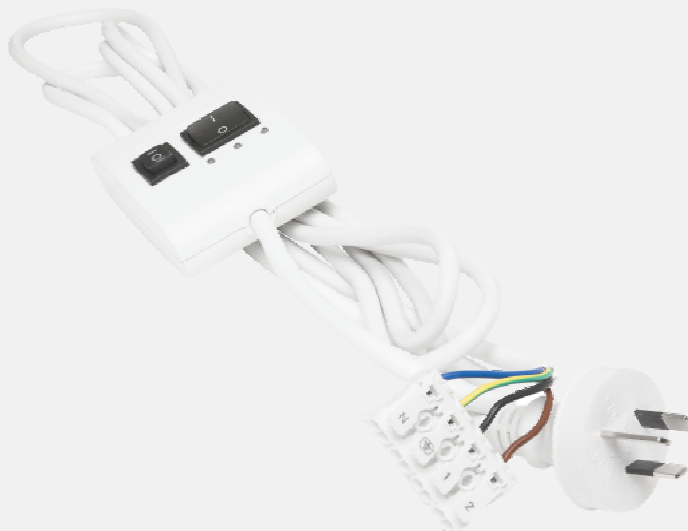


Technical drawing of a metal bracket. The left view shows an isometric perspective of the bracket, which has a central star-shaped hole and two side holes. The right view shows a side elevation with dimensions: a total width of 100, a central hole diameter of 10, and a side hole diameter of 6. A cross-section view on the far right shows the bracket's profile, which is 10 units wide at the base and tapers to 6 units at the top.

The technical drawing shows a square plate with four circular holes at the corners. The top view includes dimensions: a total width of 100 mm, a distance from the center to the hole center of 50 mm, and a hole diameter of 16 mm. A chamfer dimension of R2.5x45° is indicated. The side view shows the thickness of the plate as 10 mm.



WSB01 Limit Setting Device

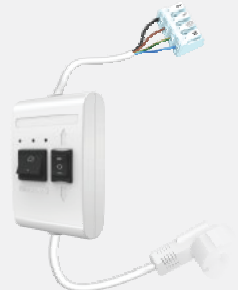


Specifications

Limit Setting Device Programming Tool

This device is for setting the limits on WSEC series motors.

All buttons are spring loaded so use as a method of powering other motors temporarily while programming is impractical.



WSB12 Test Lead



Specifications

Test Lead

This item allows you run 4 core WSS series motors in either direction while you set limits.

Alternatively you can use it as a temporary means of powering up 3 core remote control motors while you set limits. Switch is locking so it does not need to be held down.



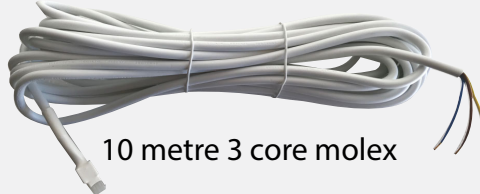
Molex Cables

AM3CM



3 metre 3 core cable

10M3CM



10 metre 3 core molex

AM4CM



3 metre 4 core cable

Solar Panel 3 Metre Extension Lead

Extends the distance between
WSERD50 15/12 and TYB002 solar panel
with battery storage.



Molex Extenders

Extends the distance between
Molex tail and motor.

4 core 20cm extension



4 core 60cm extension



Manual Override Motor Acc.

A3018 Crank Handle

This item is for manual override motors,
and is 1.2m in length

A3018-3 Crank Handle

This item is for manual override motors,
and is 3m in length



A3047

Eyelet

Optional 300mm length
motor comes supplied with
100mm version

The RED **80+Nm** listings in the 70mm tube section below indicates that this motor is incompatible with a 70mm tube, due to its physical size.

70MM TUBE

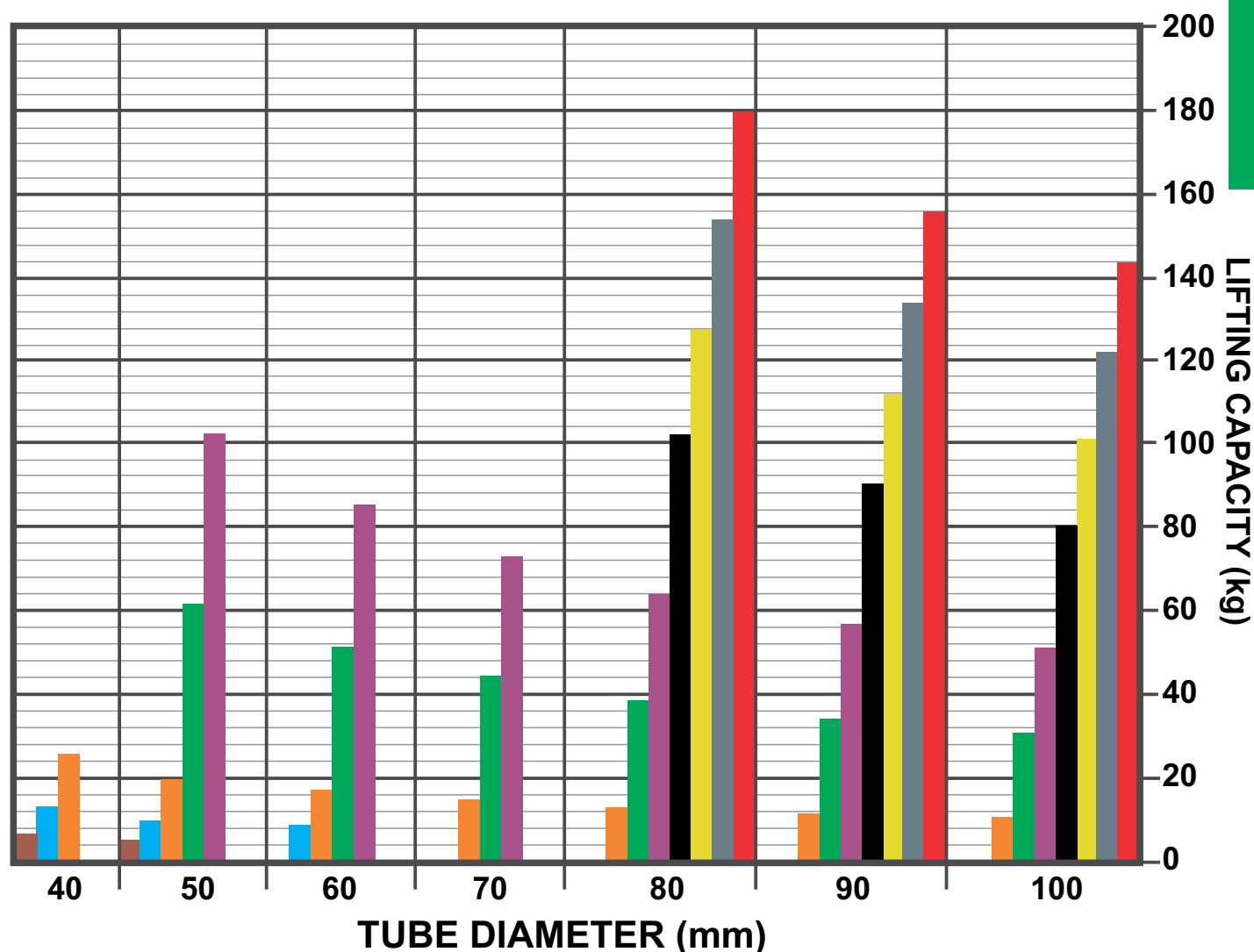
NUMBER OF ARMS	2 ARMS	3 ARMS	4 ARMS
UP TO 1.5M PROJECTION	30Nm	30Nm	50Nm
UP TO 2.0M PROJECTION	30Nm	50Nm	50Nm
UP TO 2.5M PROJECTION	30Nm	50Nm	80+Nm
UP TO 3.0M PROJECTION	50Nm	50Nm	80+Nm
UP TO 3.5M PROJECTION	50Nm	80+Nm	80+Nm
UP TO 4.0M PROJECTION	50Nm	80+Nm	80+Nm

78MM TUBE

NUMBER OF ARMS	2 ARMS	3 ARMS	4 ARMS
UP TO 1.5M PROJECTION	30Nm	50Nm	50Nm
UP TO 2.0M PROJECTION	30Nm	50Nm	80+Nm
UP TO 2.5M PROJECTION	50Nm	50Nm	80+Nm
UP TO 3.0M PROJECTION	50Nm	50Nm	80+Nm
UP TO 3.5M PROJECTION	50Nm	80+Nm	80+Nm
UP TO 4.0M PROJECTION	50Nm	80+Nm	80+Nm

Motor Lifting Capacity Chart

49



2Nm 5Nm 10Nm 30Nm 50Nm
80Nm 100Nm 120Nm 140Nm

To use this chart, simply find your tube size at the bottom of the chart, find the colour that matches the capacity of your motor and check against the weights on the right side.



MOTORISATION MADE EASY
AUSTRALIA / USA / CANADA



Alpha
TUBULAR MOTORS PTY LTD
MOTORISATION MADE EASY
AUSTRALIA / USA / CANADA

Unit 108 12 Pioneer Avenue

Tuggerah Business Park NSW 2259 Australia

Phone: +61 2 4355 4775 Fax: +61 2 4355 4273

sales@alphamotors.com.au www.alphamotors.com.au

